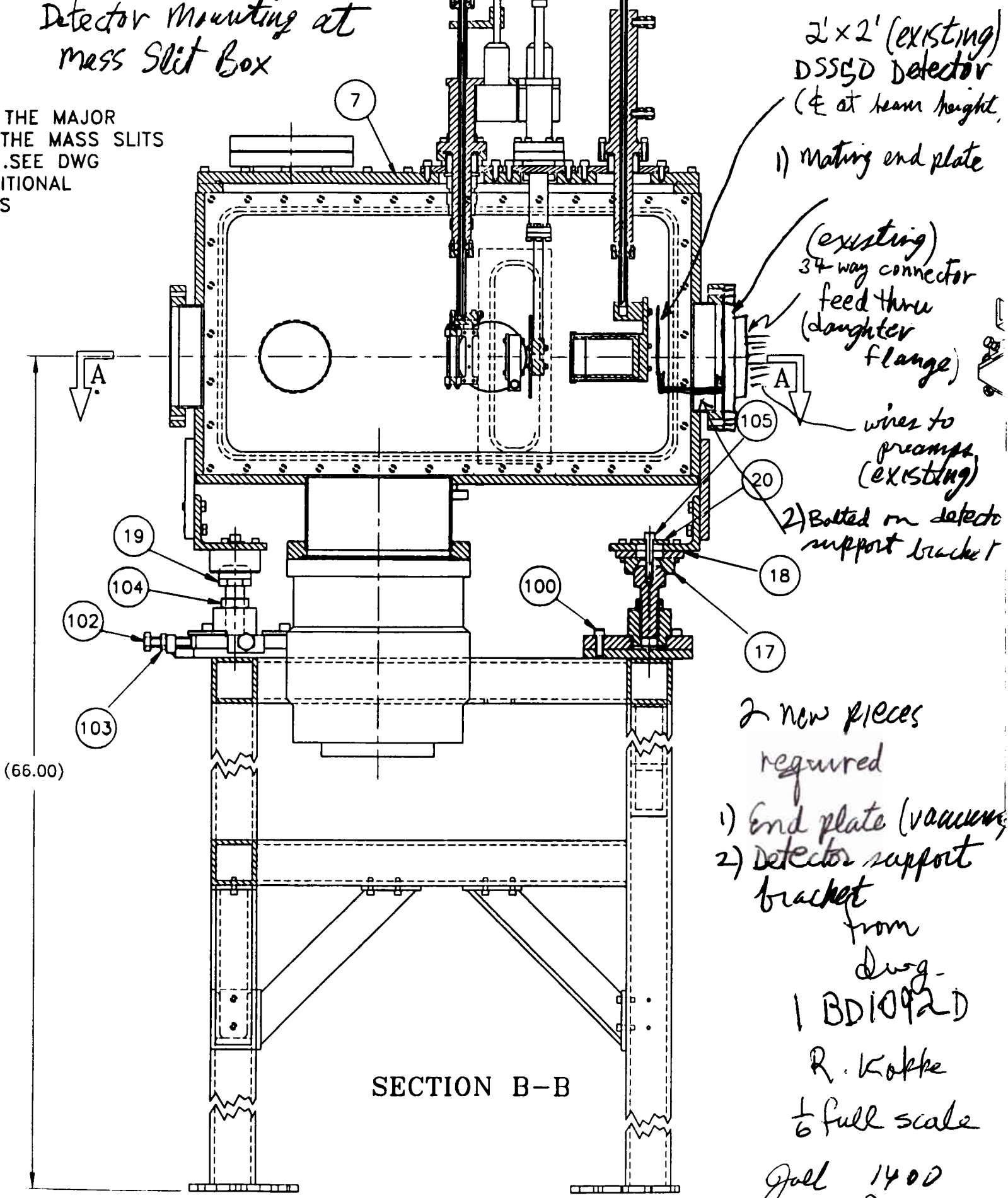


Detector Mounting at mass Slit Box

THE MAJOR
THE MASS SLITS
..SEE DWG
ADDITIONAL
S



2'x2' (existing)
DSSGD Detector
($\frac{1}{2}$ at beam height)

1) Mating end plate

(existing)
34-way connector
feed thru
(daughter
flange)

wires to
preamp
(existing)

2) Bolted on detector
support bracket

2 new pieces
required

- 1) End plate (vacuum)
- 2) Detector support
bracket

from

dwg.

1 BD1092-D

R. Kolke

$\frac{1}{6}$ full scale

Joel 1400

9 sep 03

SECTION B-B

c

d