

Fig. 1. Thin windows are fabricated by depositing silicon rich—silicon nitride on both surfaces of silicon wafers using LPCVD and then patterning and etching the silicon from one side. This method can mass produce a great variety of window shapes.

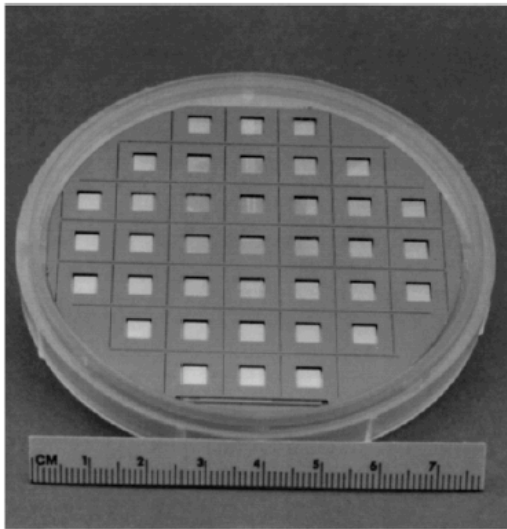


Fig. 2a. 5 mm edge, 100 nm thick silicon nitride window array.

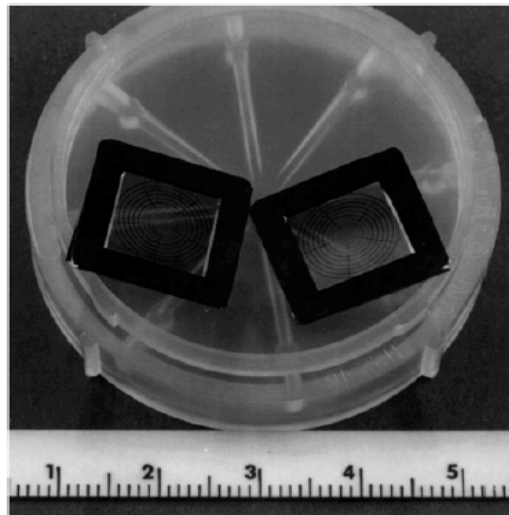


Fig. 2c. 10 mm edge, 100 nm thick silicon nitride windows with targets.

Foils from Silson:

- Window: 5 x 5 mm²
- Frame: 10 x 10 mm²
- 50 nm Si₃N₄ = 17 μg/cm²