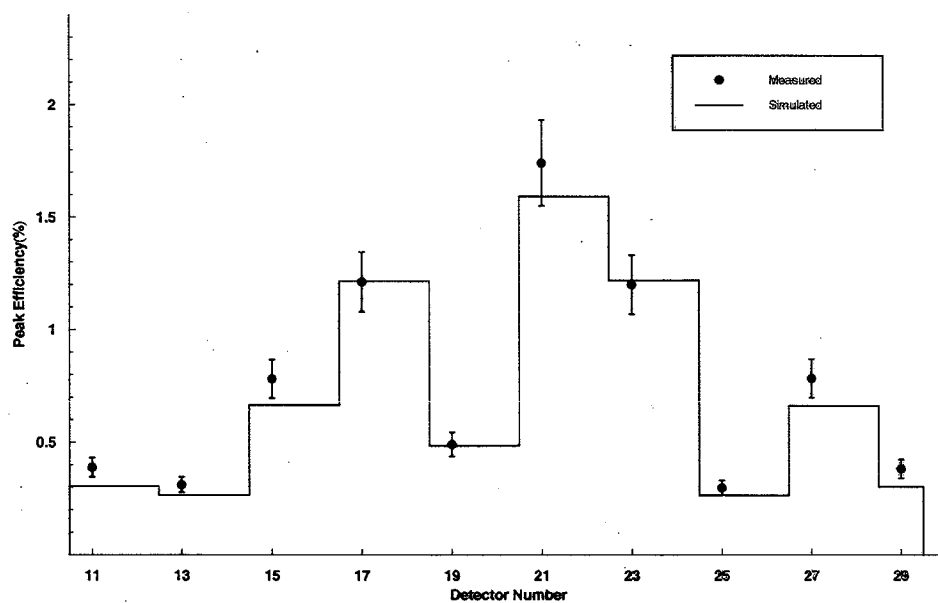


(a) Efficiency comparison between simulation and data for east detectors



(b) Efficiency comparison between simulation and data for west detectors

Figure 5.29: Detector by detector efficiency results for the $^{244}\text{Cm}^{13}\text{C}$ source positioned inside the gas target box at $z=0$, and at beam height. Each array half is in its normal operating position against the gas target box.