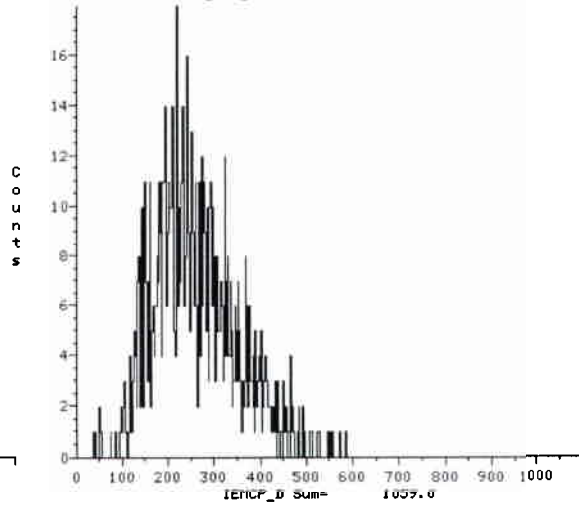
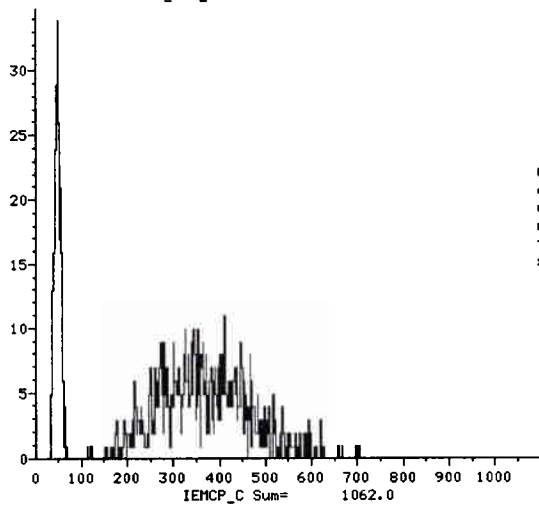
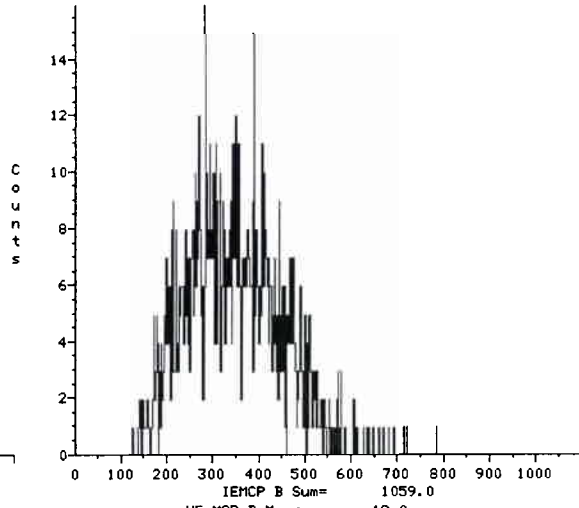
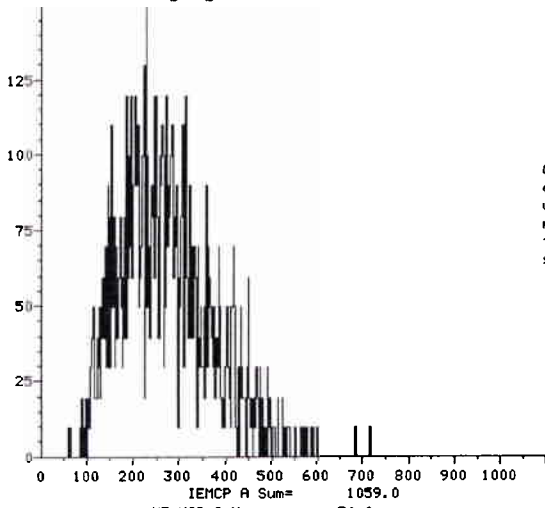
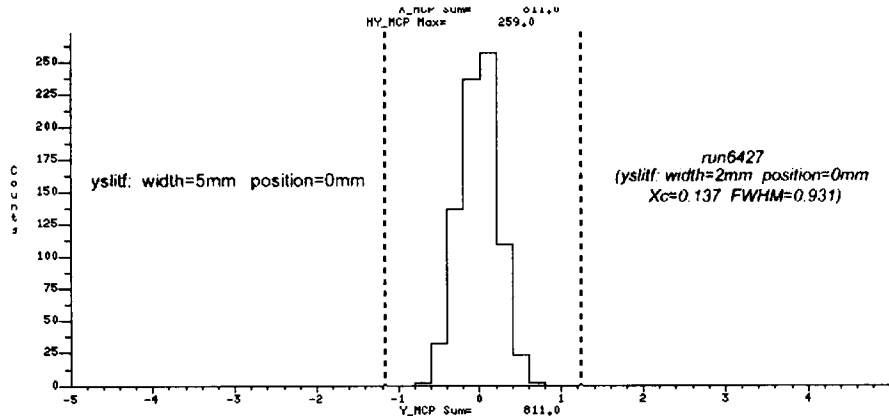
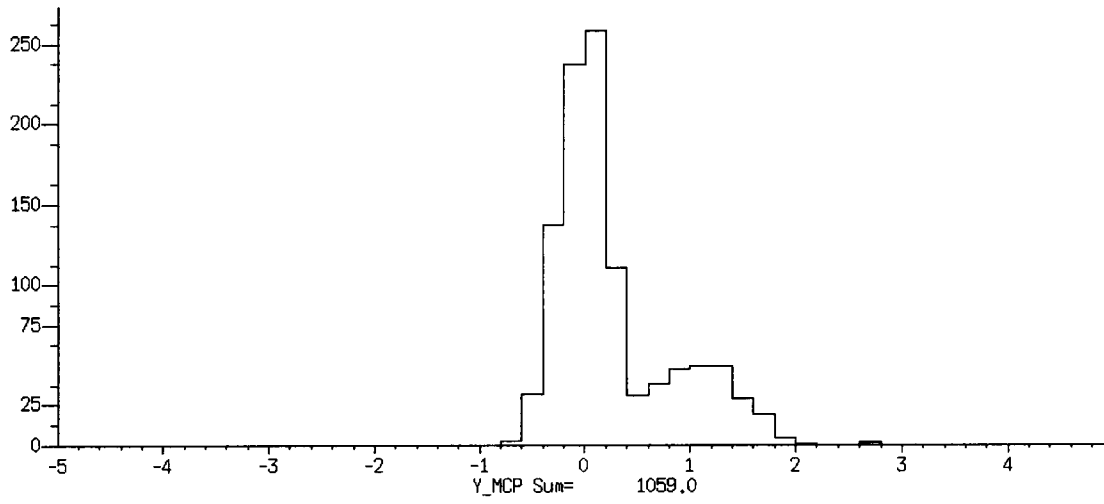


HE\_MCP\_A Max= 15.0

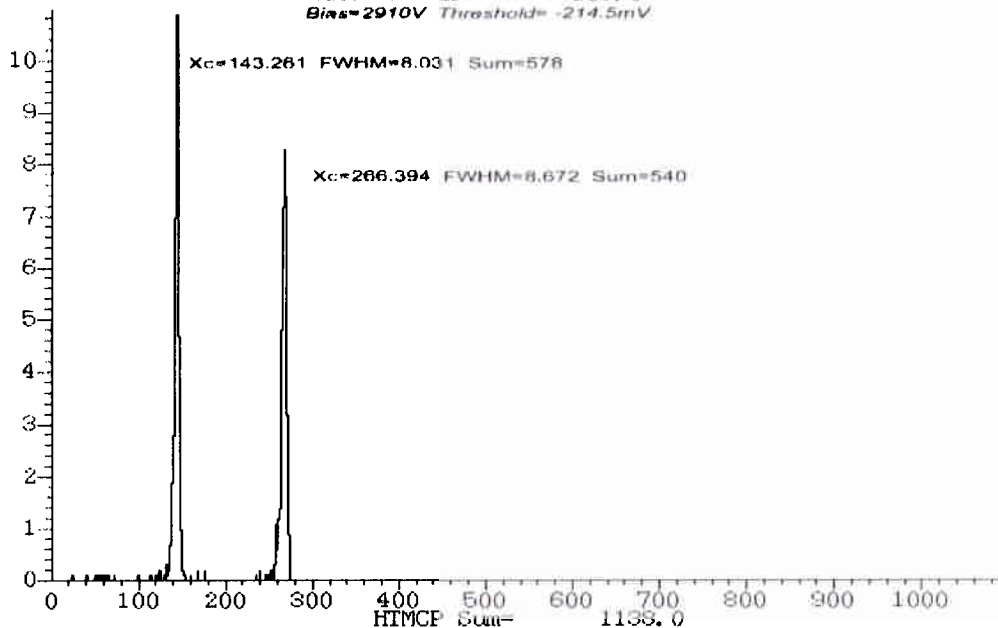
HE\_MCP\_B Max= 16.0



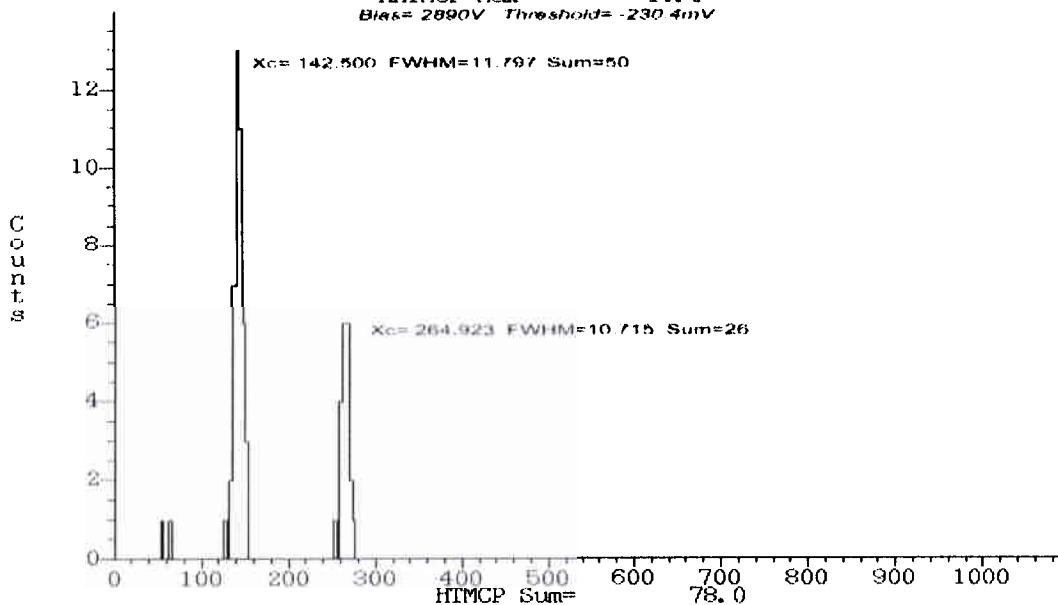
HY\_MCP Max= 259.0



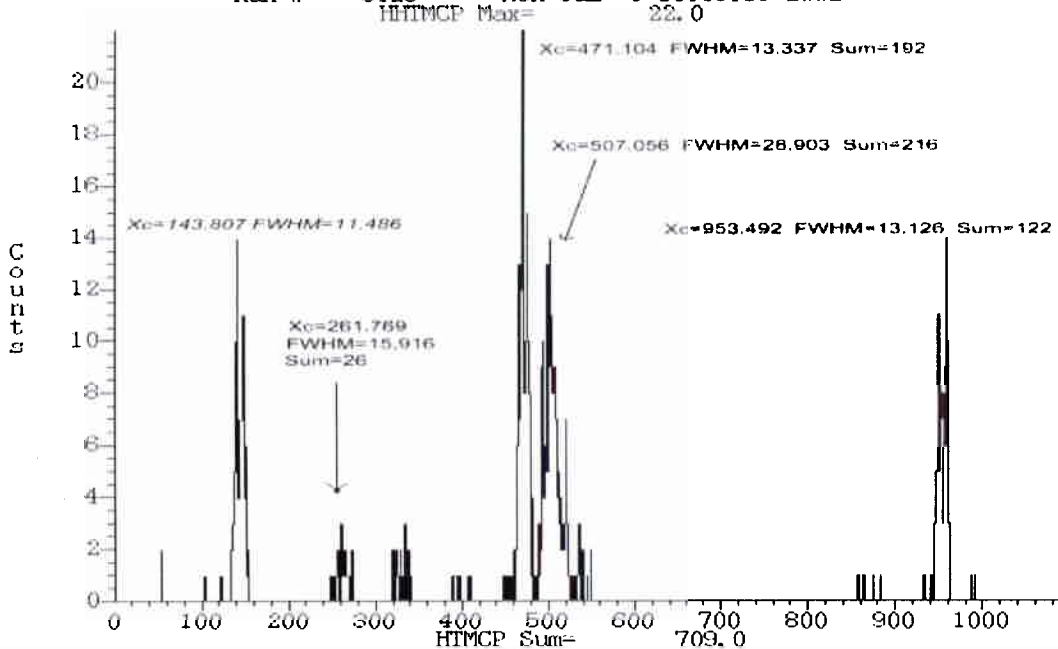
Run # 6412 Mon Jul 8 15:29:59 2002  
HITMCP Max= 109.0  
Bias=2910V Threshold=-214.5mV



Run # 6428 Mon Jul 8 14:32:09 2002  
HITMCP Max= 13.0  
Bias=2890V Threshold=-230.4mV

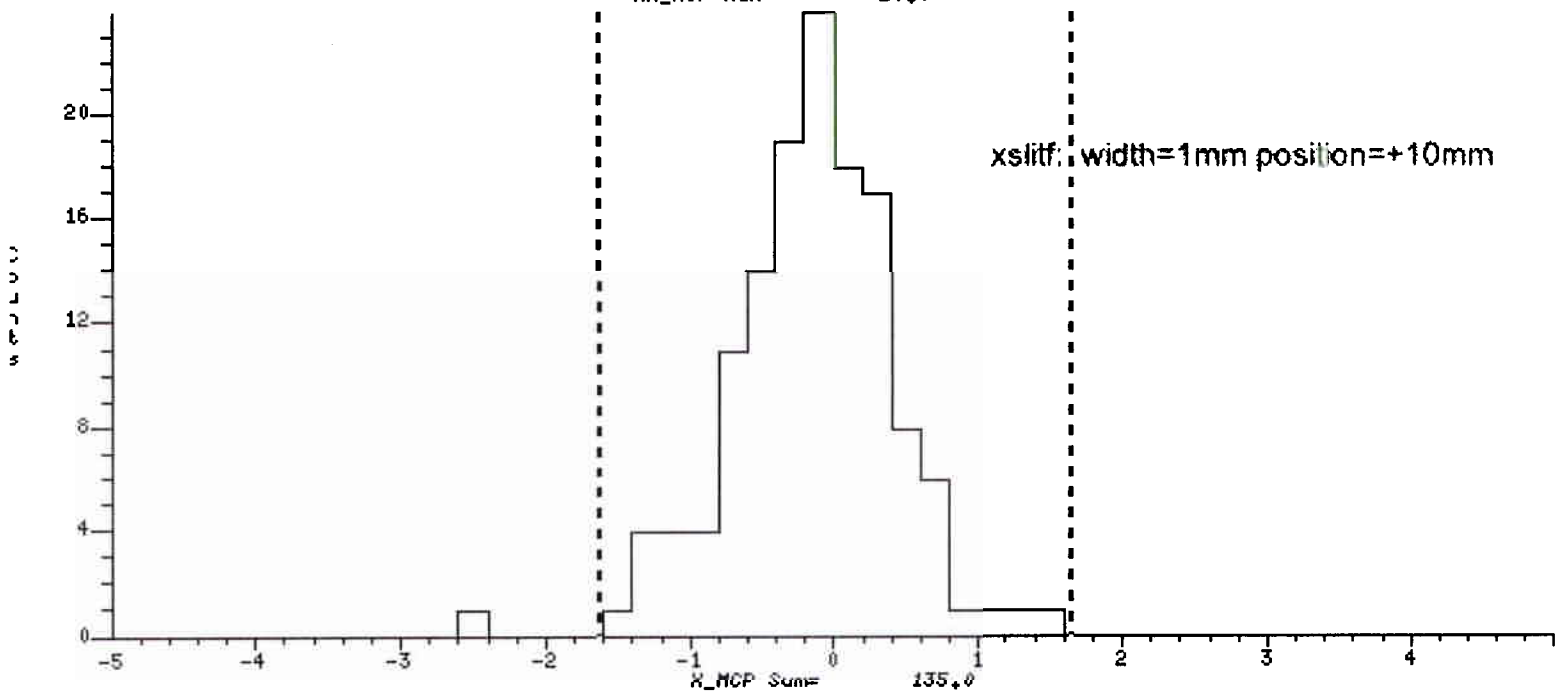


Run # 6423 Mon Jul 8 14:49:15 2002  
HITMCP Max= 22.0  
Bias=2890V Threshold=-50mV

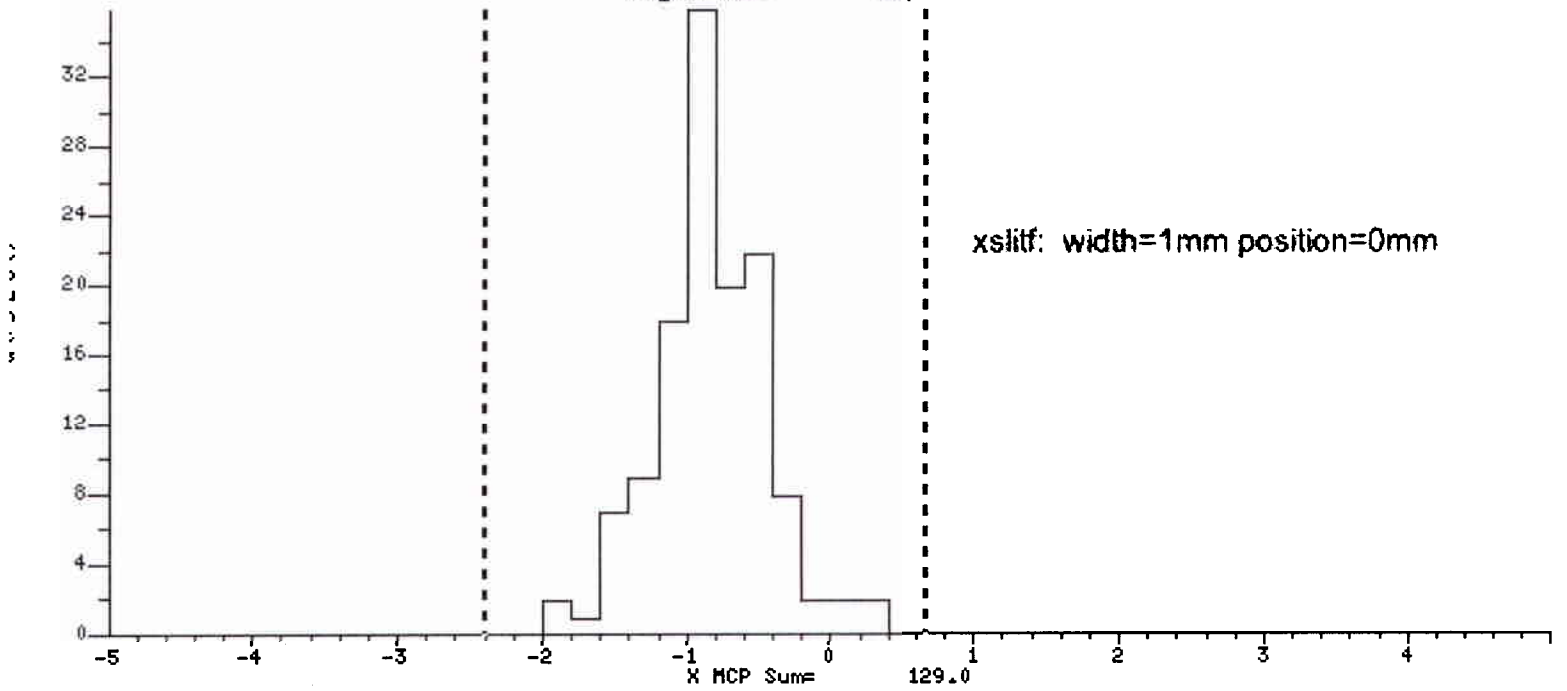


# X Position

( -1.6000) ( 1.6000)  
Sum 134. Xc -0.131 FWHM 1.255  
Run # 6416 Mon Jul 8 15:17:19 2002

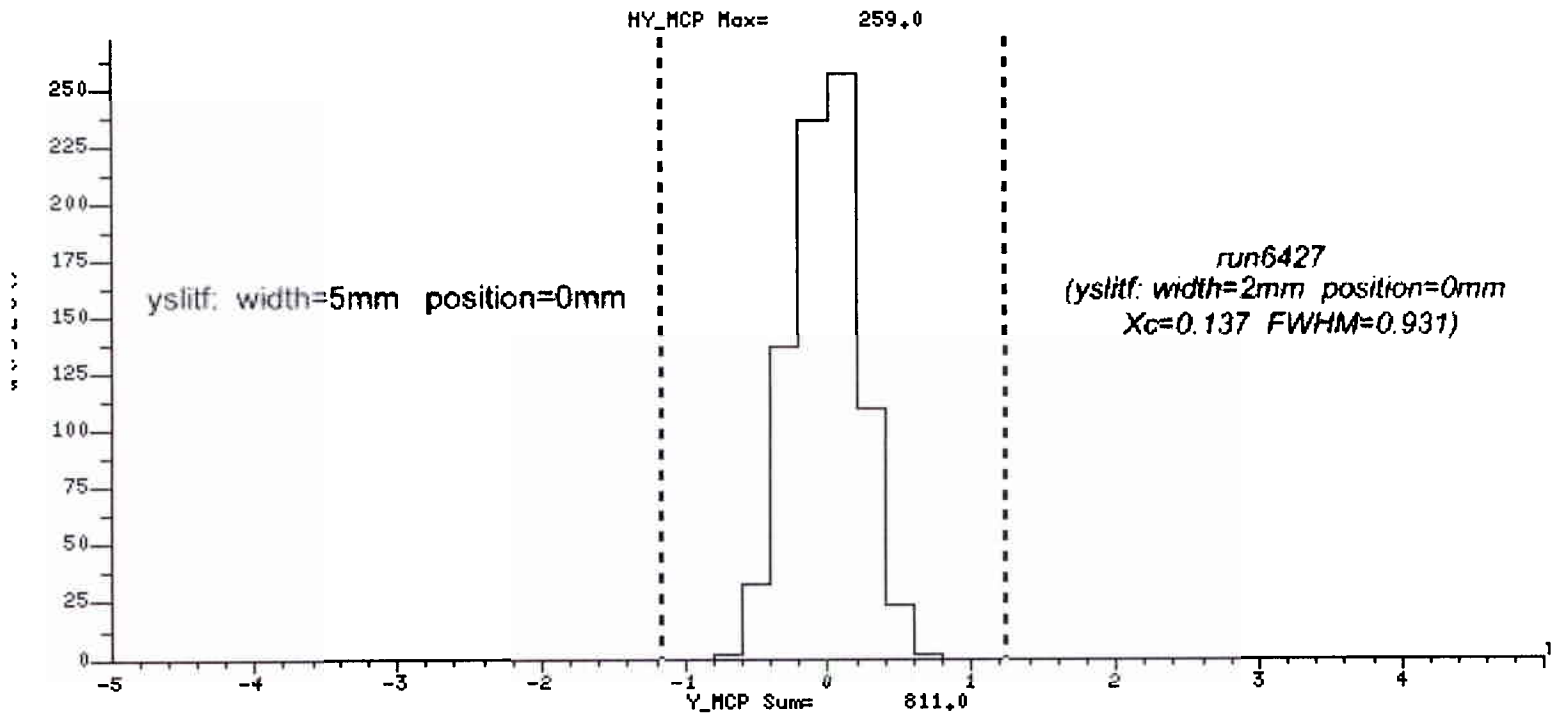


( -2.4000) ( 0.6000)  
Sum 129. Xc -0.827 FWHM 0.925  
Run # 6415 Mon Jul 8 15:11:23 2002

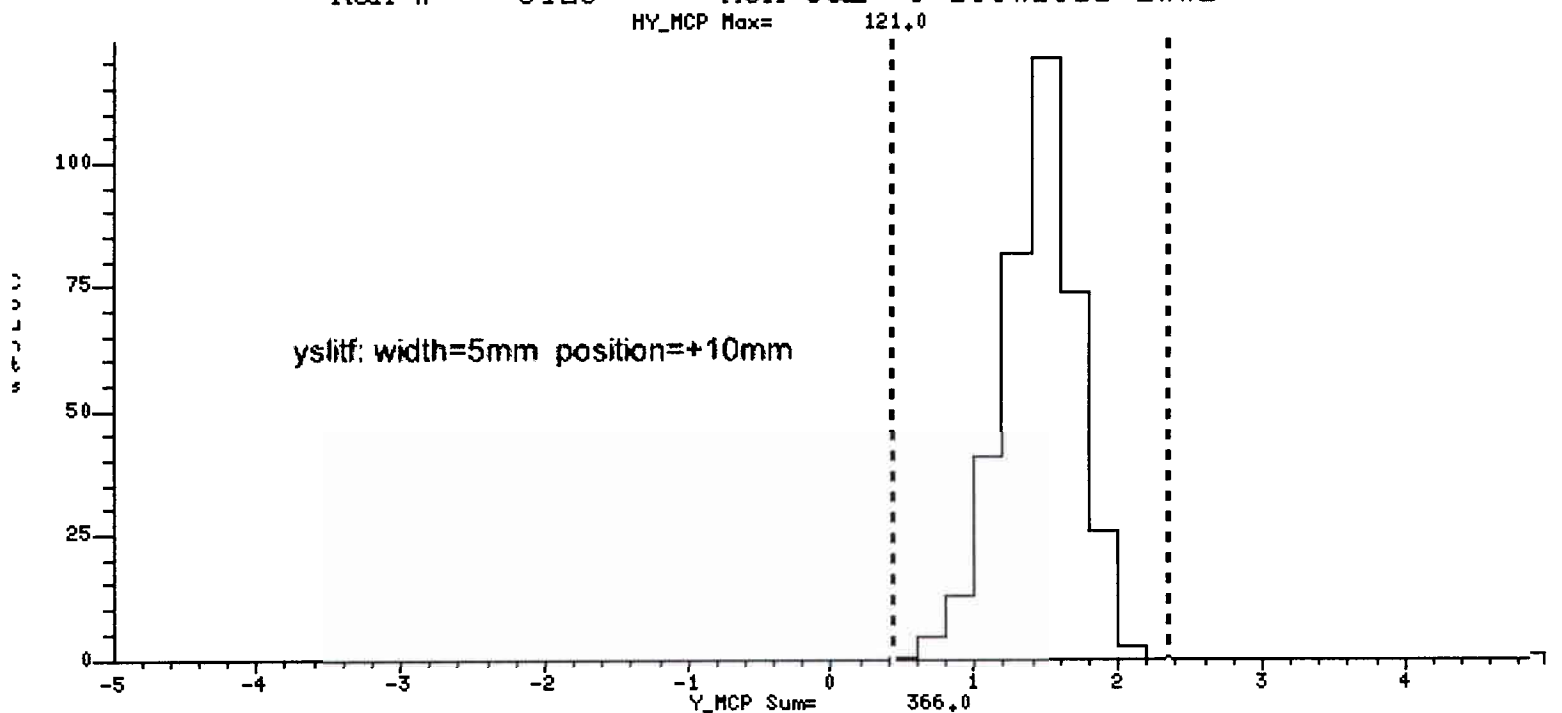


# Y Position

( -1.2000) ( 1.2000)  
Sum 811. Xc -0.010 FWHM 0.563  
Run # 6423 Mon Jul 8 14:46:18 2002



( 0.4000) ( 2.4000)  
Sum 366. Xc 1.449 FWHM 0.626  
Run # 6425 Mon Jul 8 15:01:11 2002



X Nova Plot Window



( -2.0000 ) ( 0.8000 )  
Sum 78. Xc -0.669 FWHM 0.855  
Run # 6428 Mon Jul 8 14:26:04 2002  
HX\_MCP Max= 23.0

