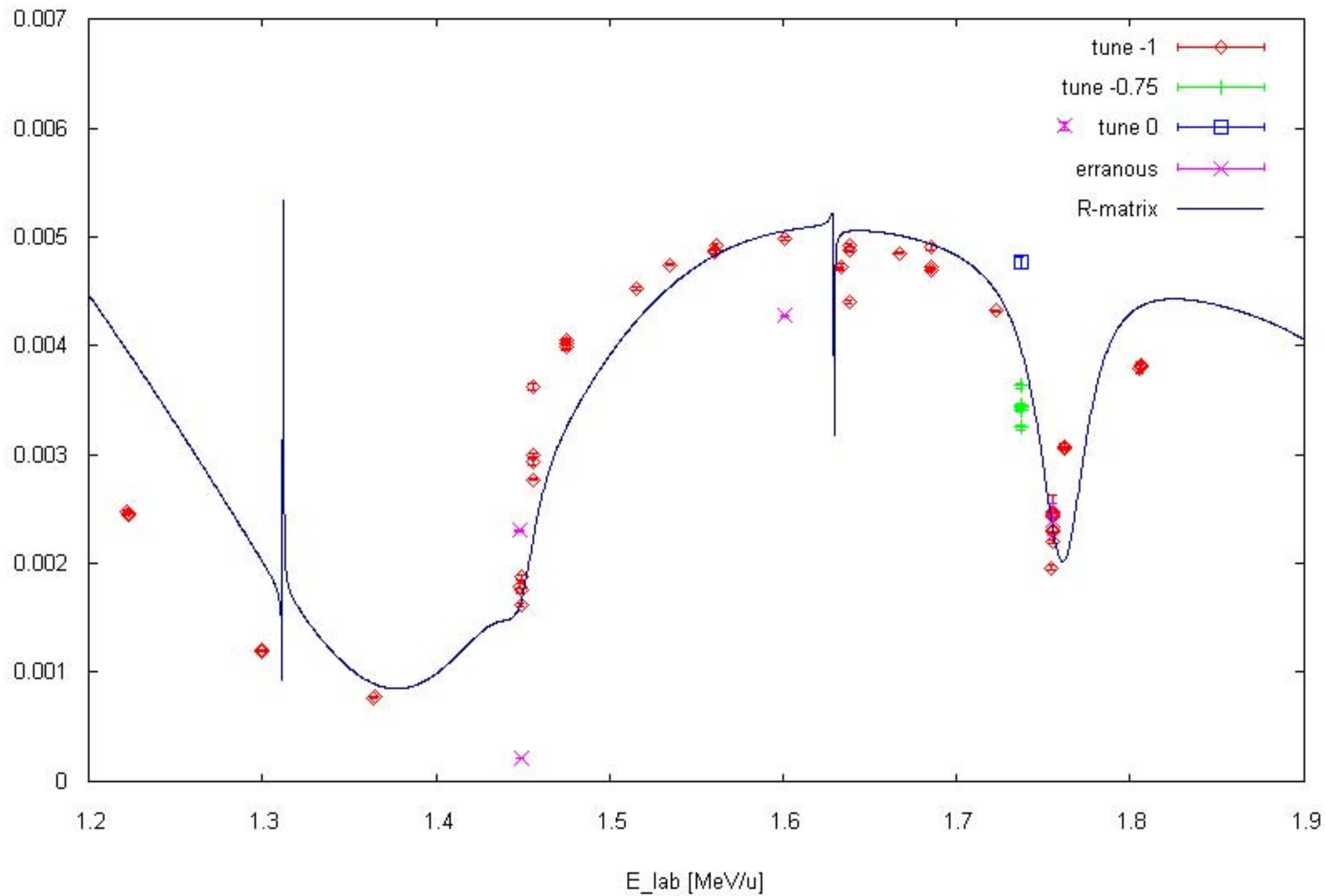
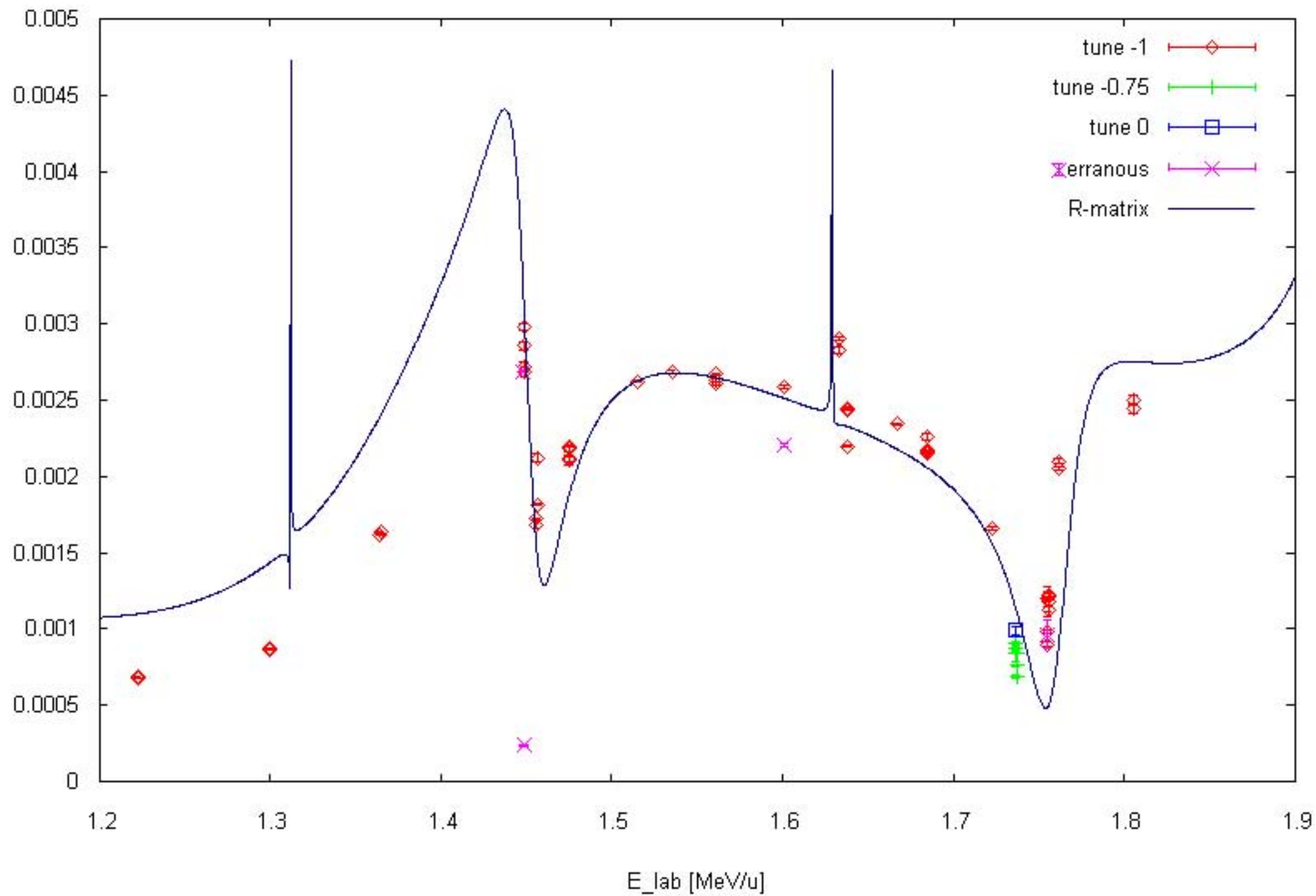


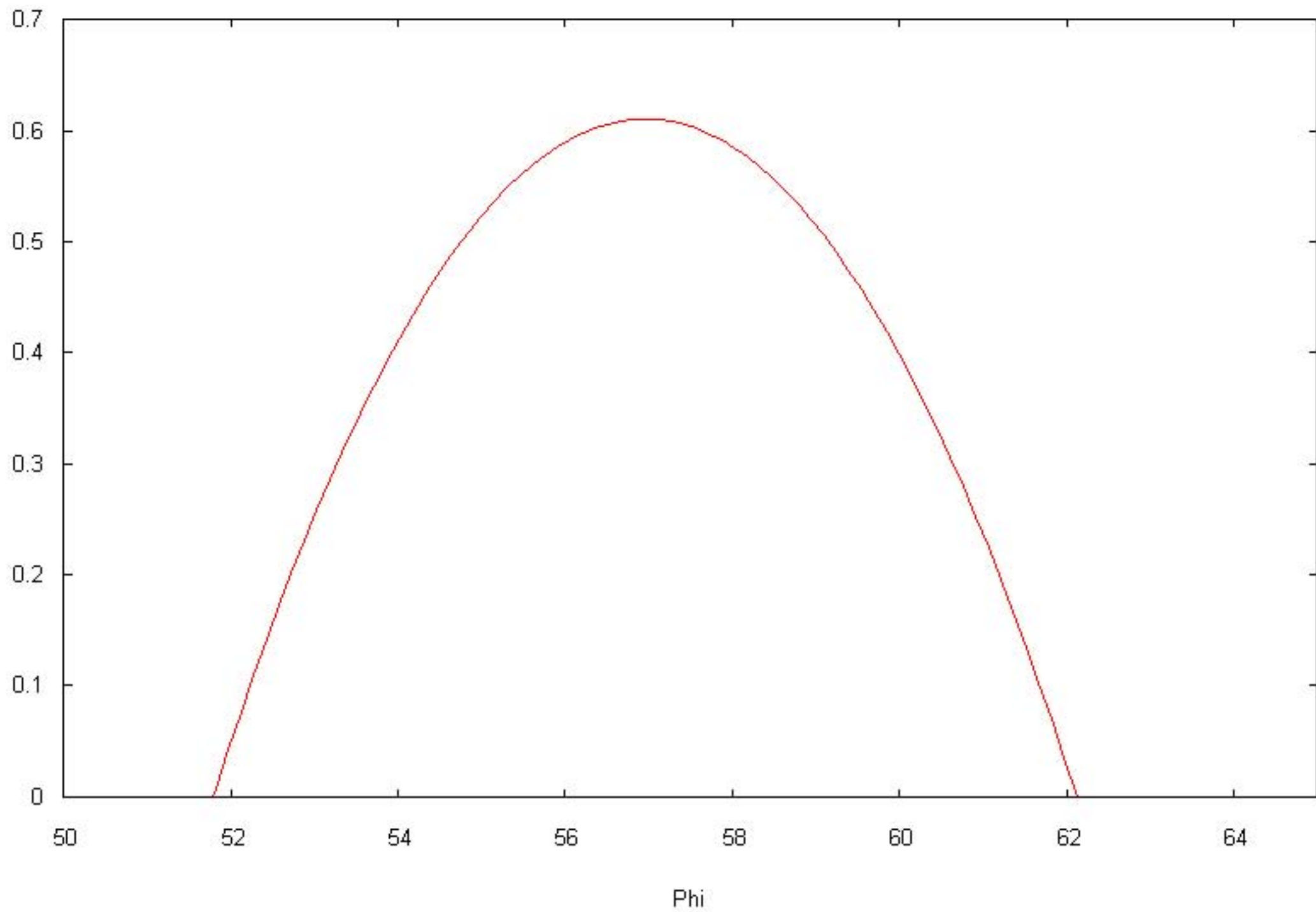
EM2 (30 deg)



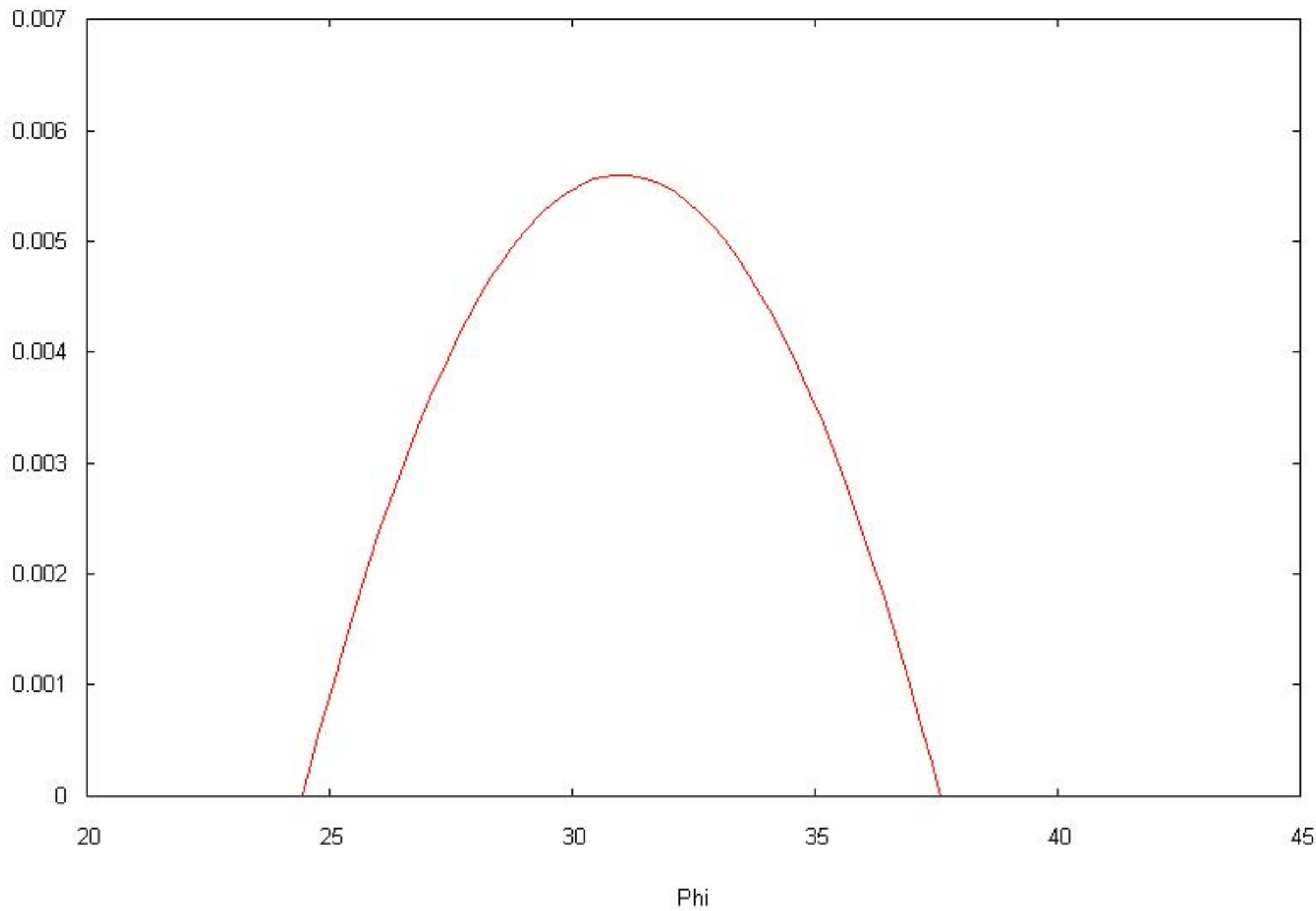
EM1 (57 deg)

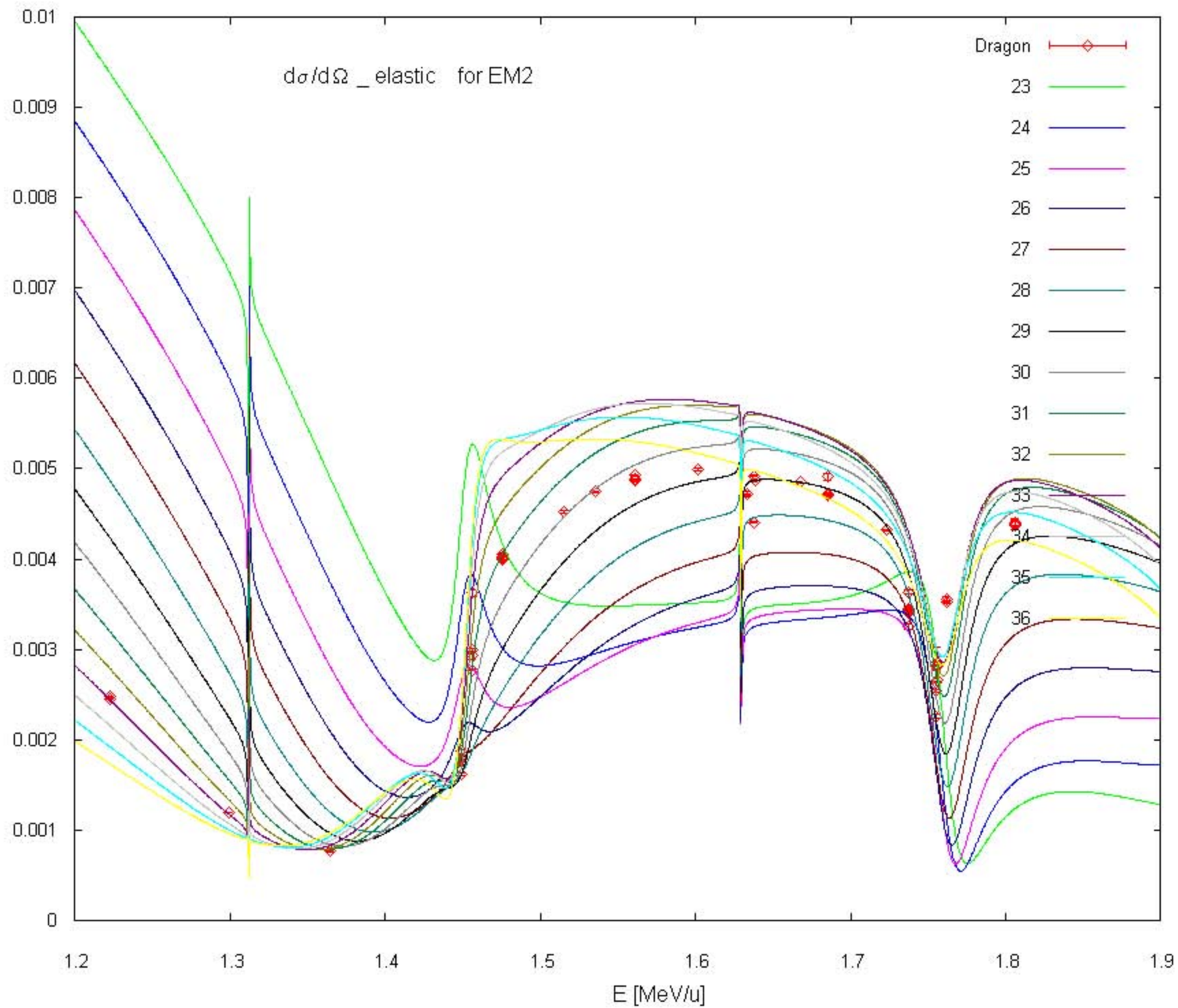


Angle Contributions for EM1

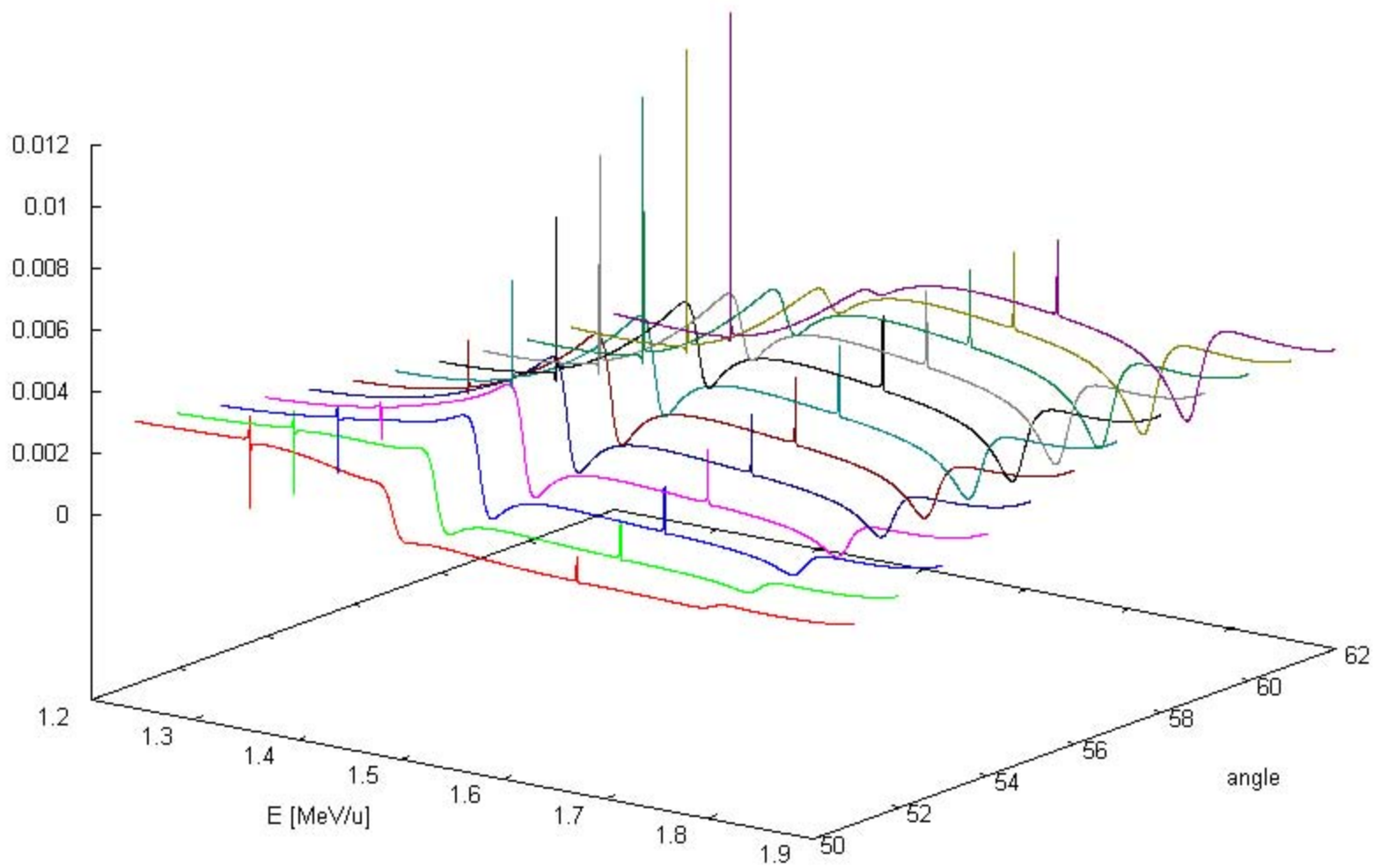


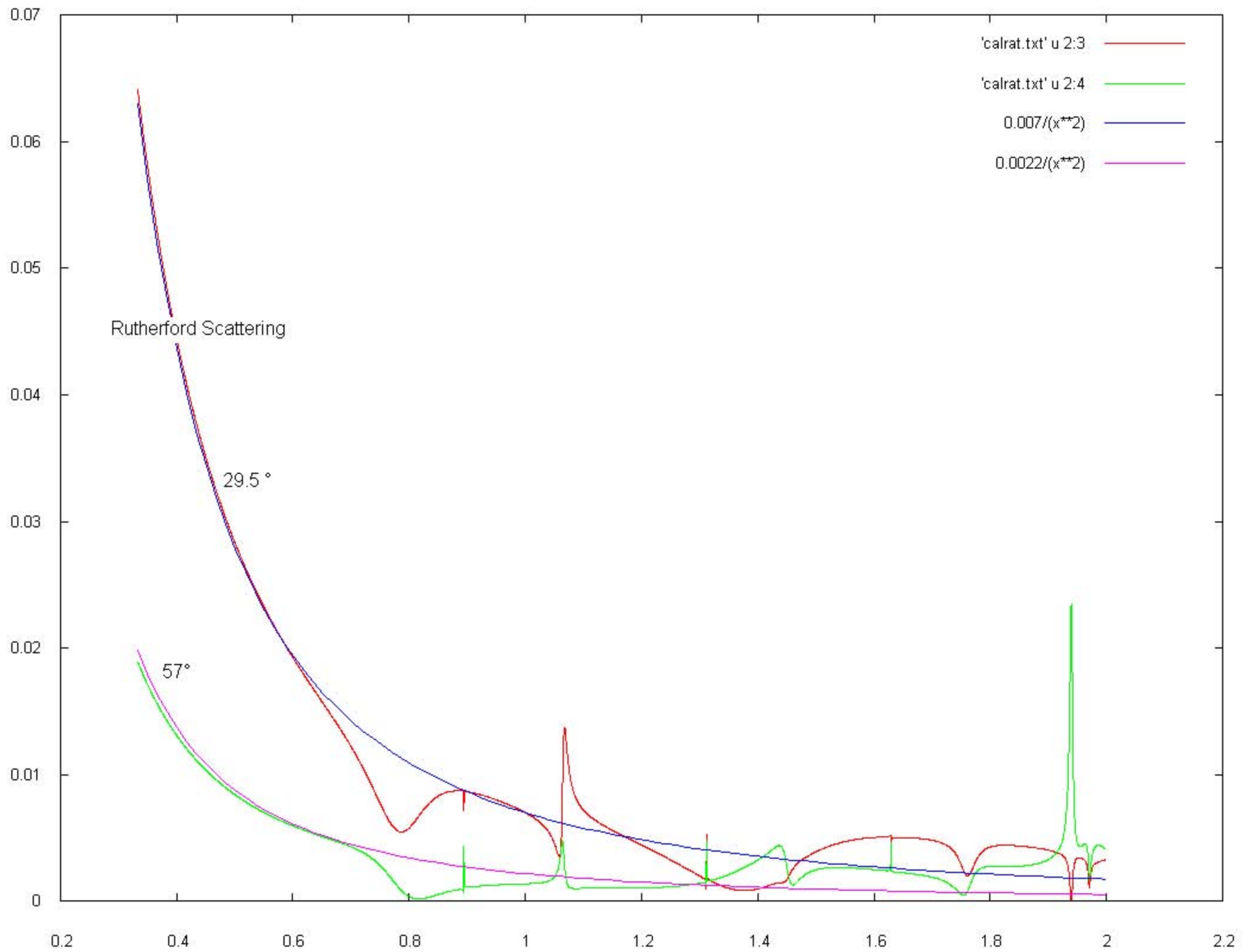
Angle Contributions for EM2



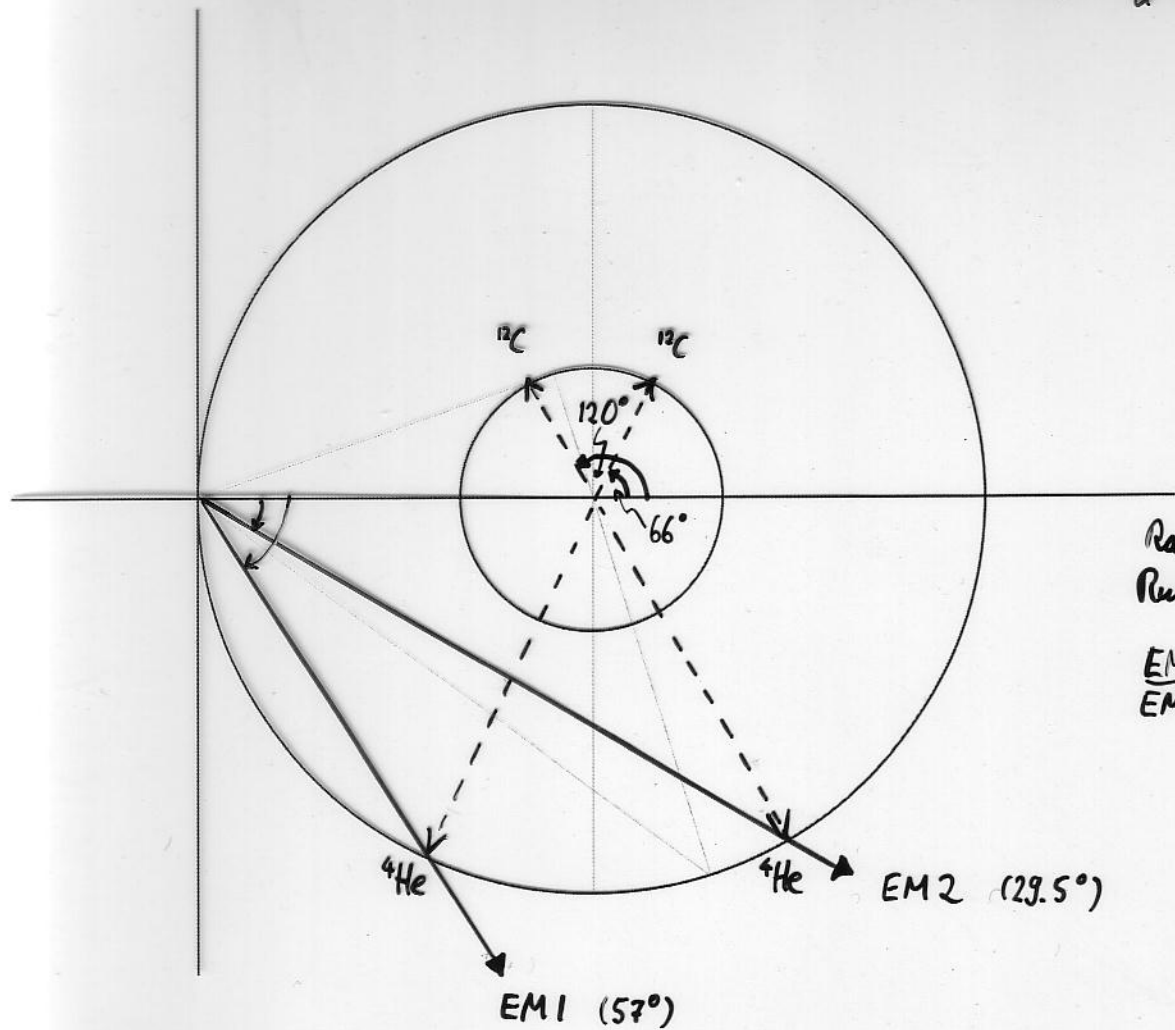


Elastic Scattering Cross Sections for EM 1



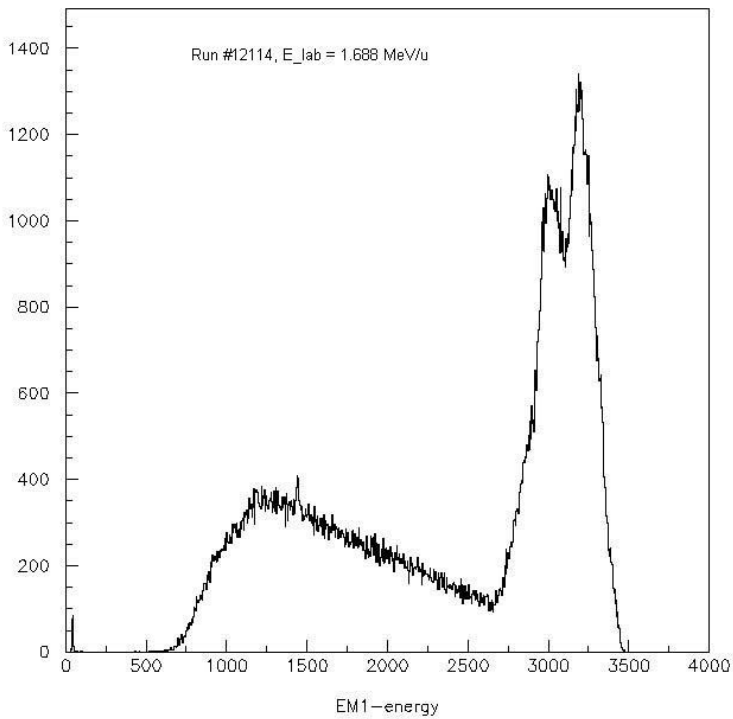
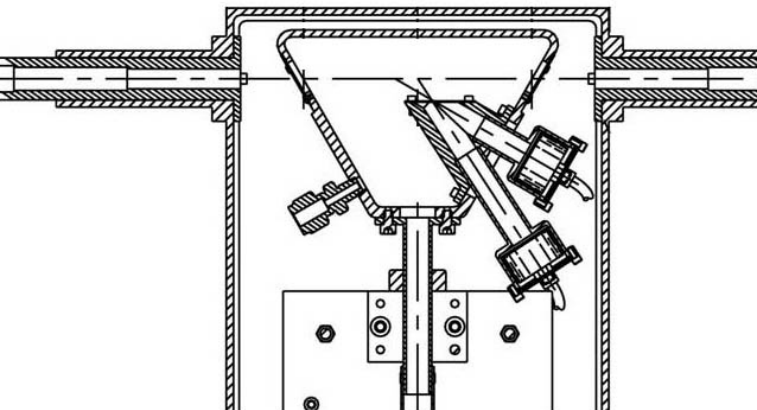


$E_{lab} \left[\frac{MeV}{u} \right]$

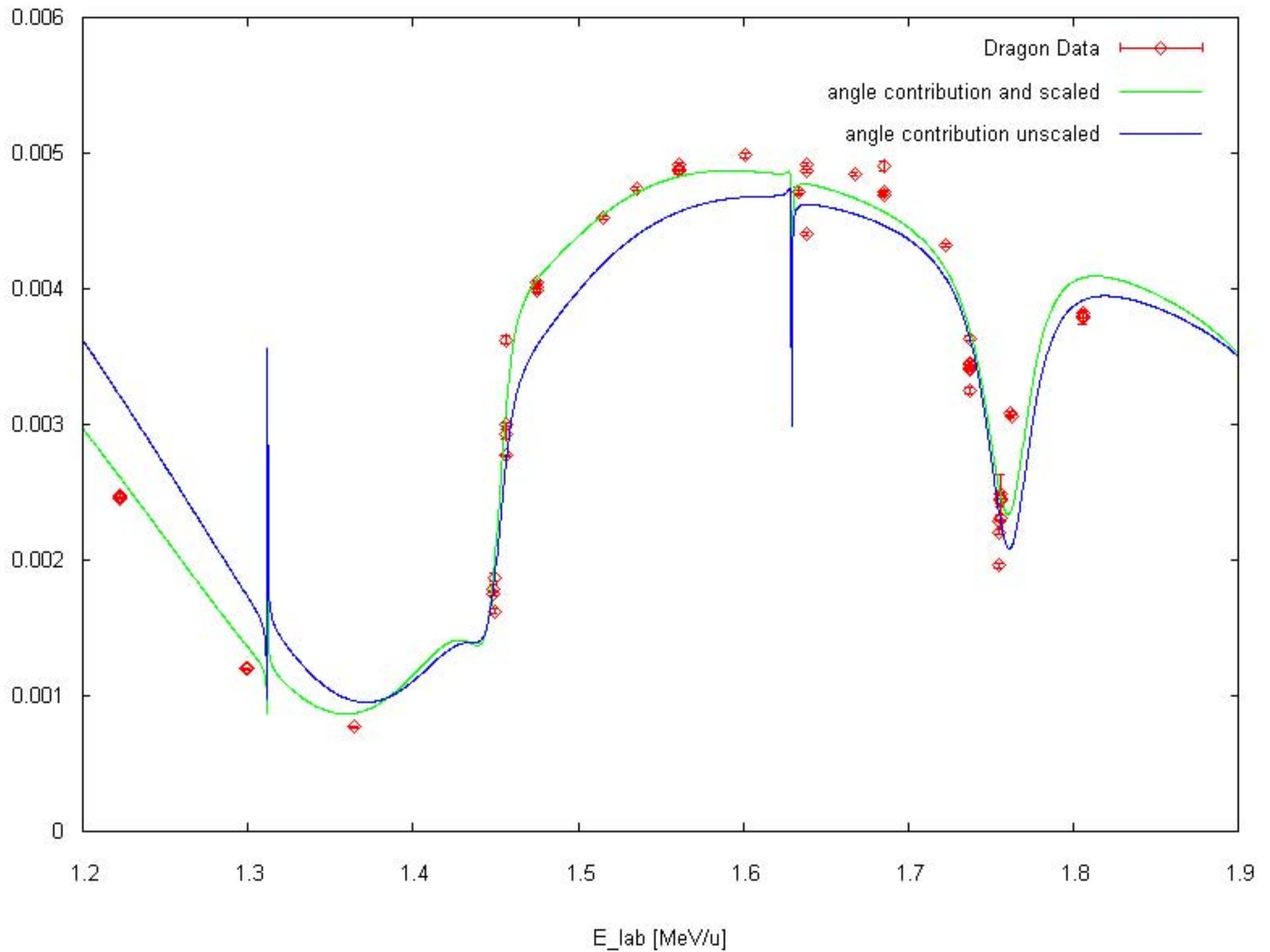


Ratio for
Rutherford Scatt.:

$$\frac{EM1}{EM2} = 9.5$$



EM2 (24.5 - 37.5 deg)



Elastic Scattering EM1

