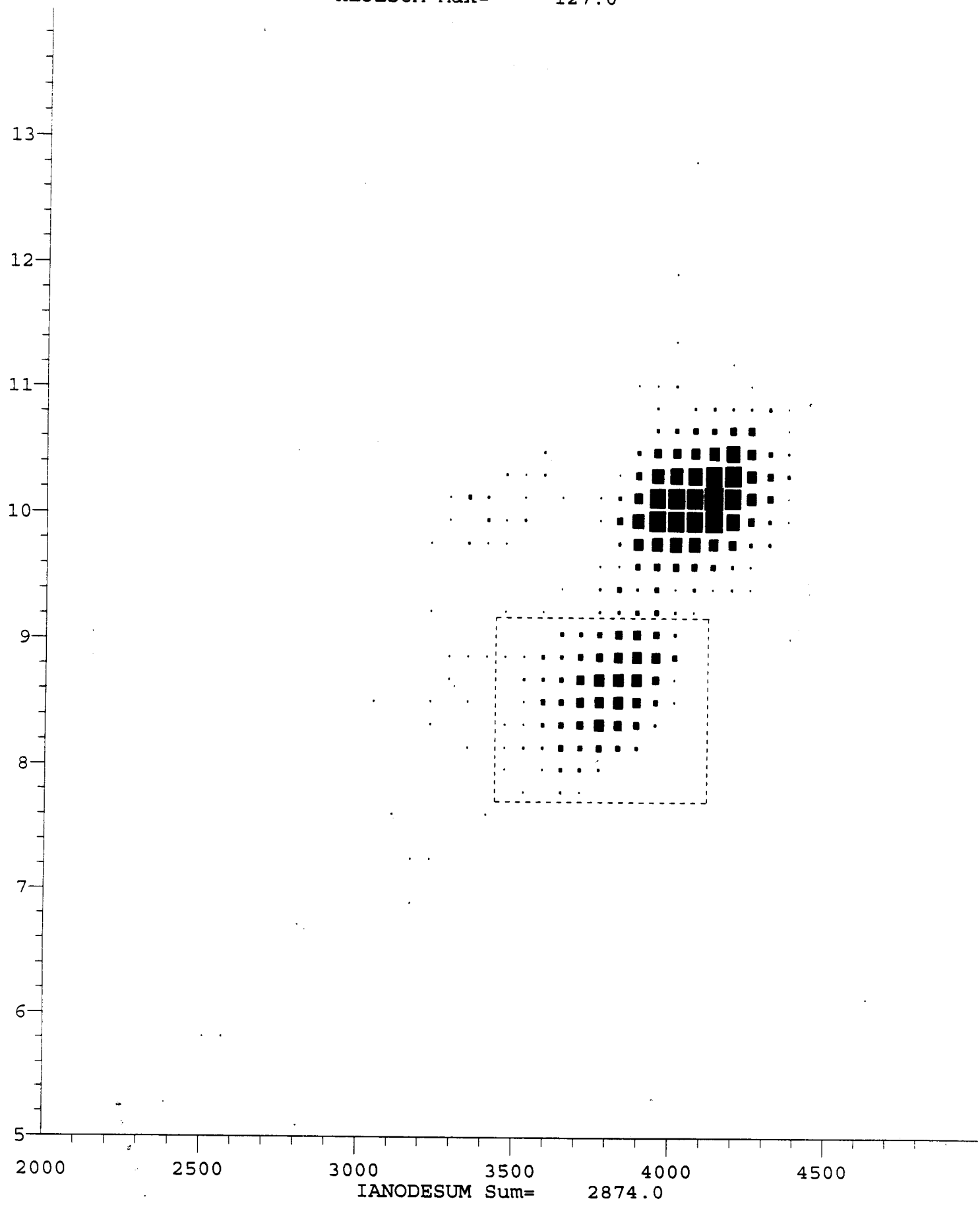


( 3440.0000, 770.0000) ( 4100.0000, 914.0000)  
 Sum 657. Xc 3804.794 FWHM 248.711 Yc 864.123 FWHM 69.071  
 Run # 6672 Tue Aug 13 09:23:34 2002  
 HE3ESUM Max= 127.0

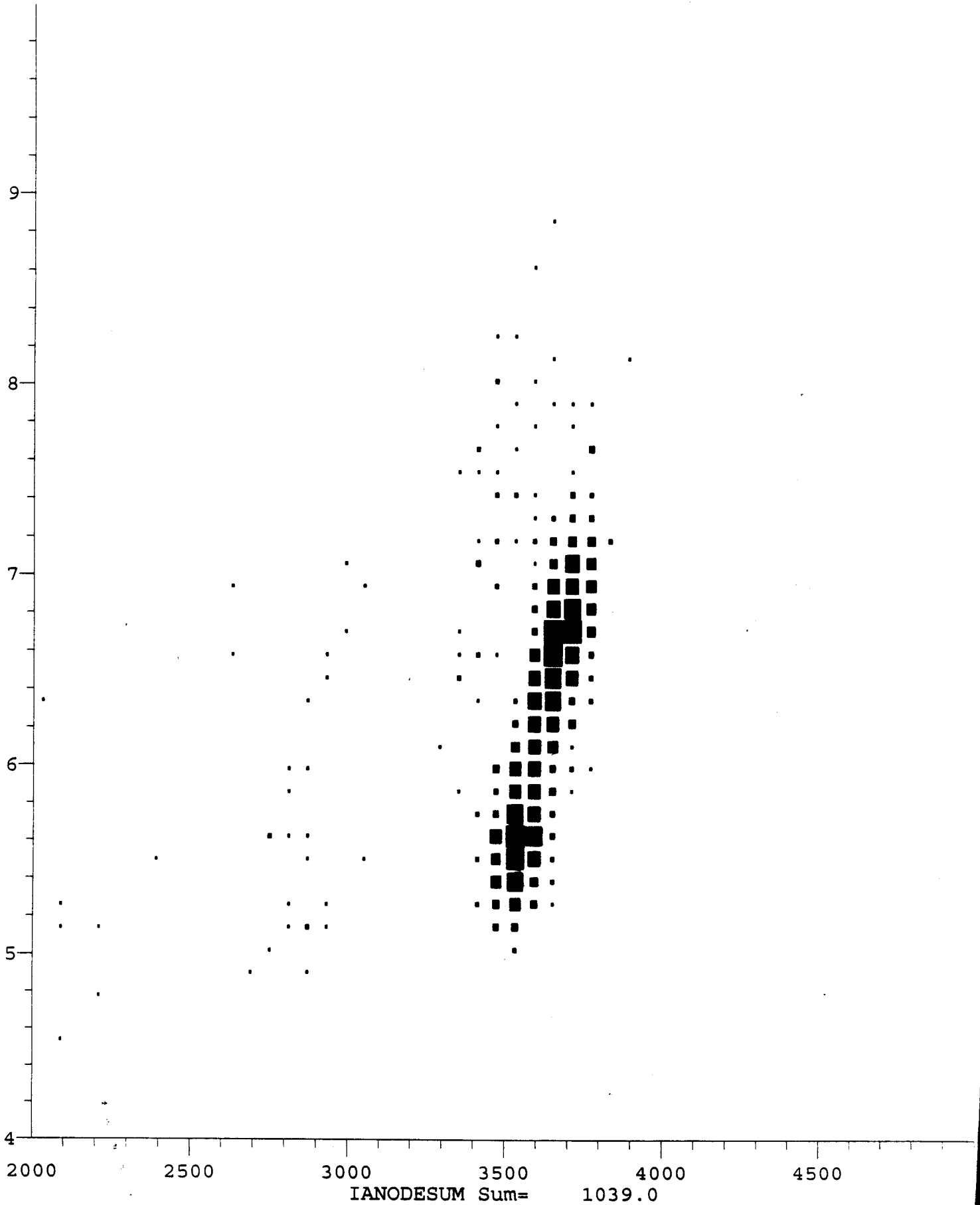
IANODE3 (10\*\*2)



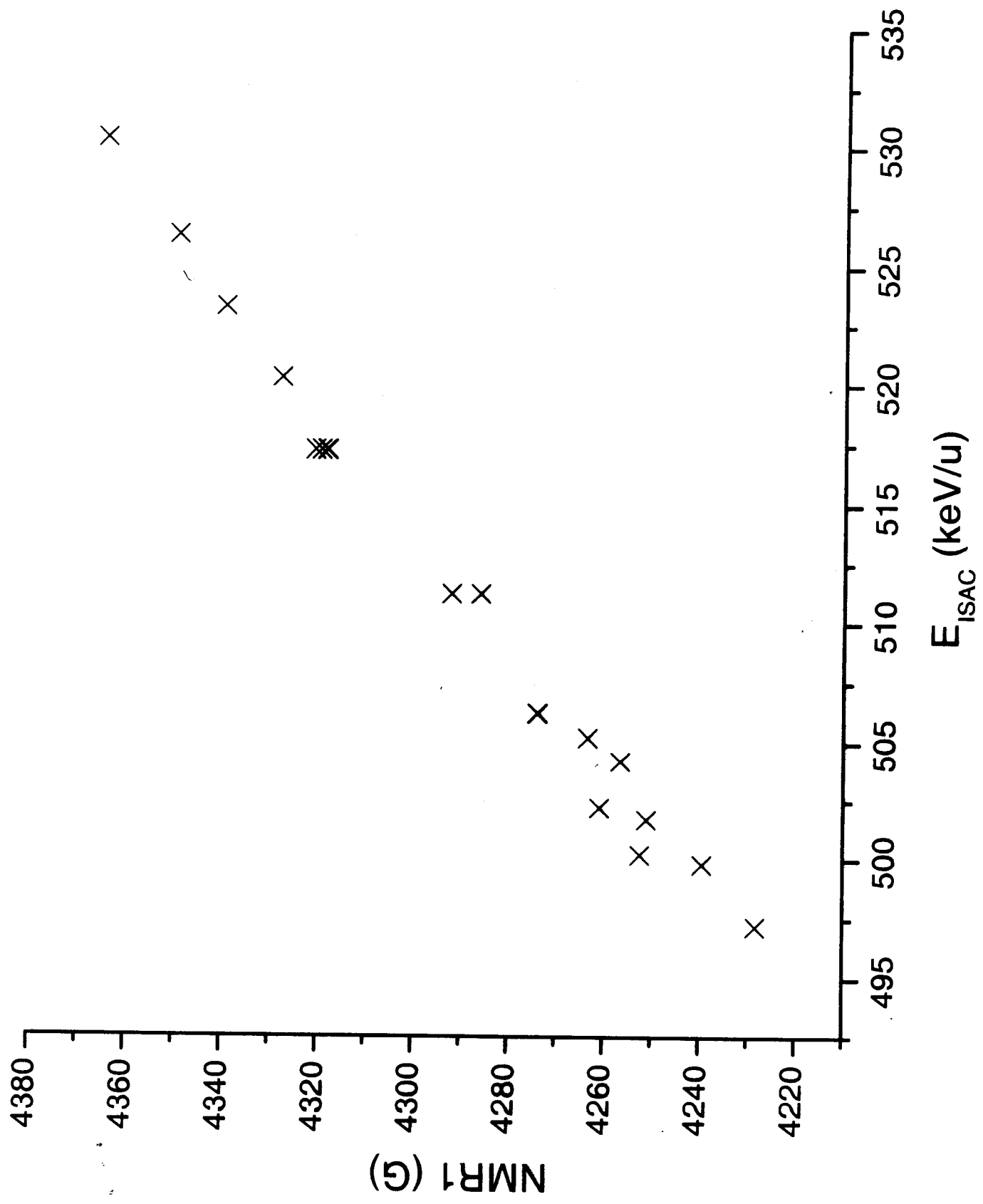
JK S. S. 100V

Run # 6643 Fri Aug 9 19:49:40 2002  
HE1ESUM Max= 41.0

IANODE 1  
( 10 \* \* 2 )



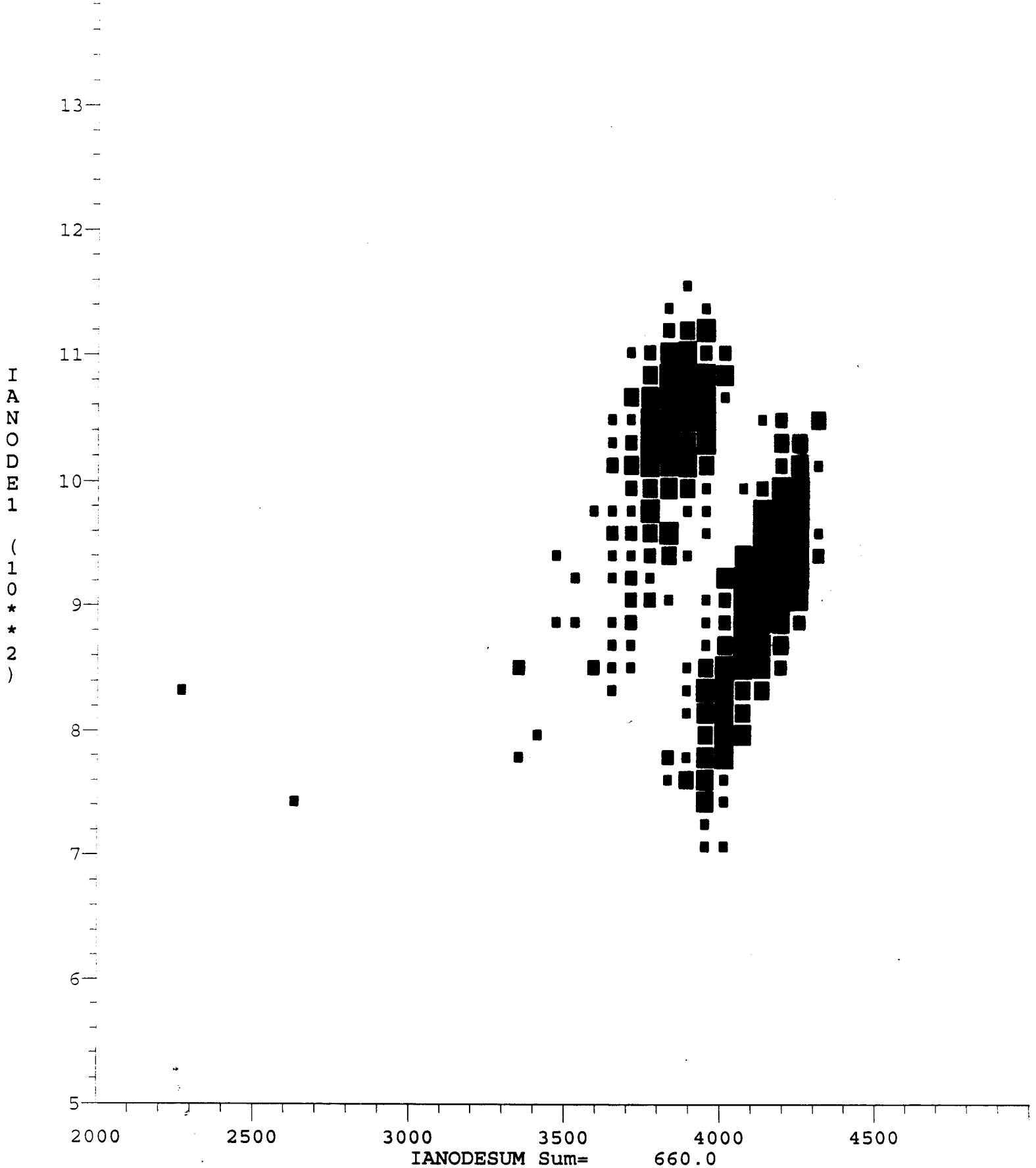
# NMR1 vs EISAC, No gas, 5+



Run # 6673 Sun Aug 11 17:16:43 2002  
HE1ESUM Max= 24.0



Run # 6673 Sun Aug 11 17:16:59 2002  
HE1ESUM Max= 5.0



Run # 6672

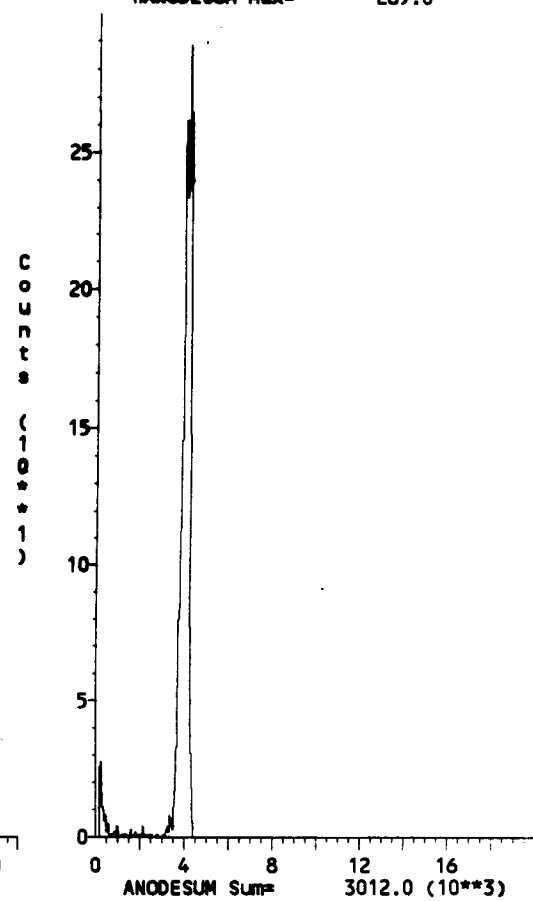
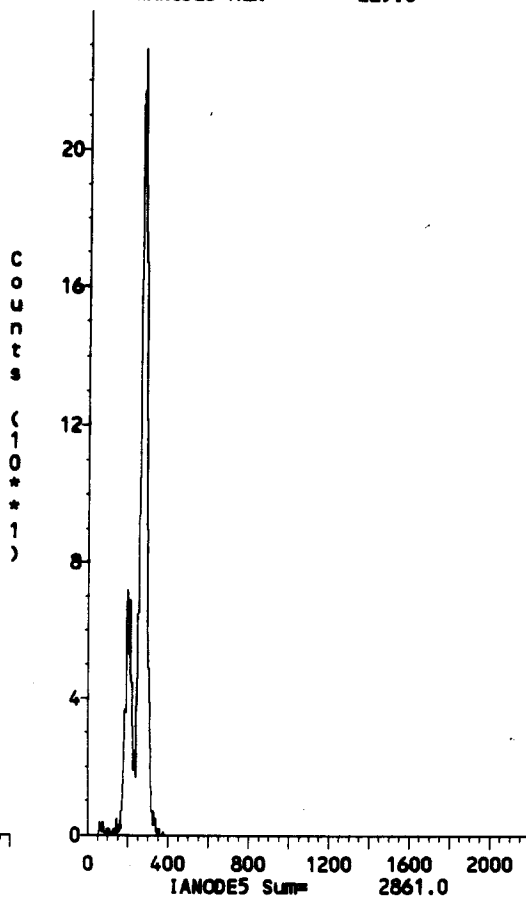
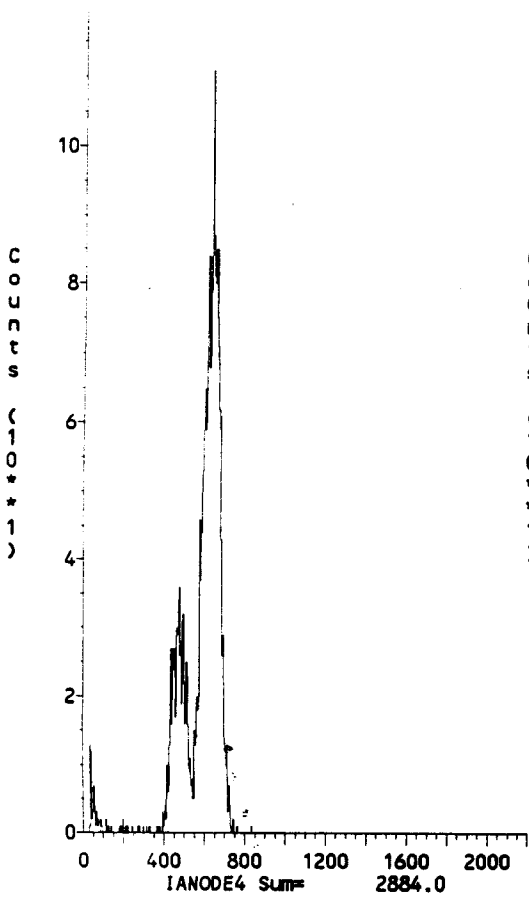
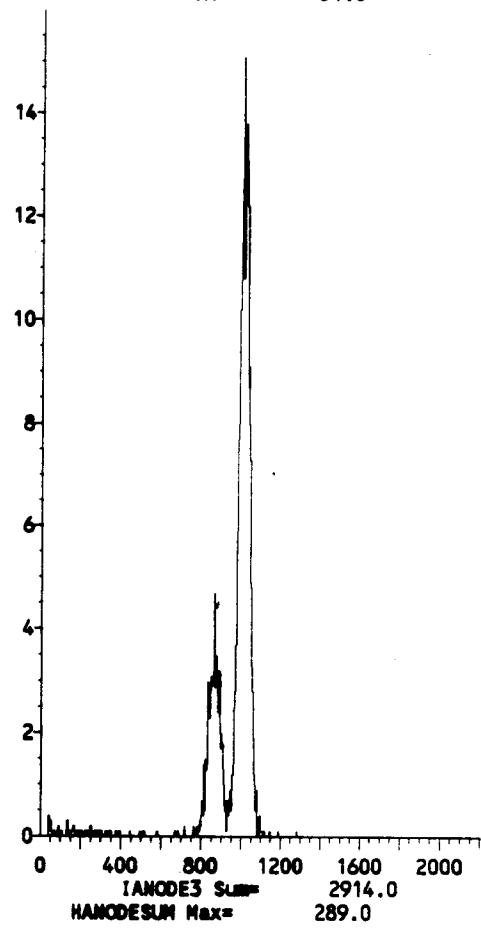
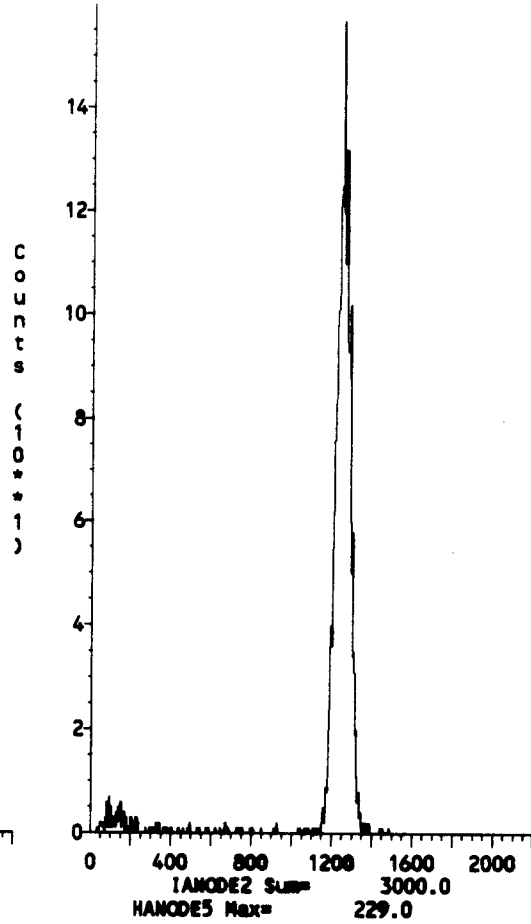
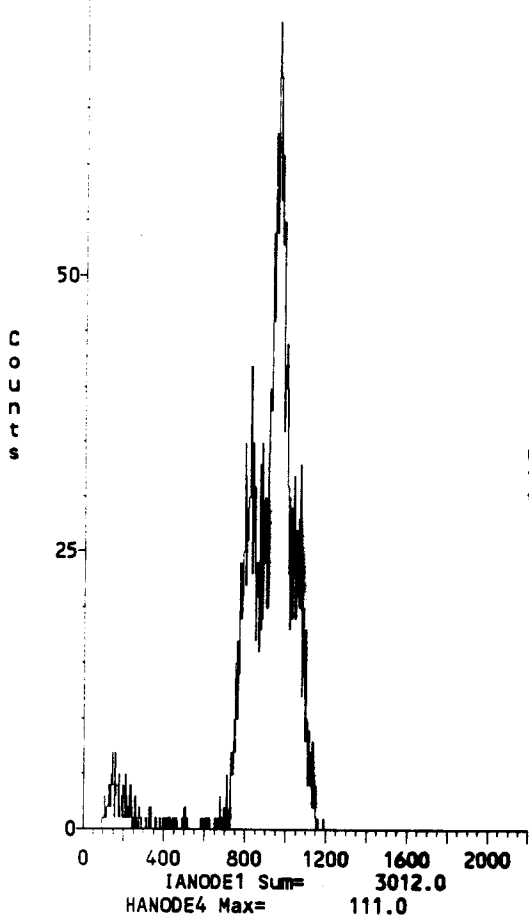
Sun Aug 11 15:44:49 2002

HANODE1 Max= 73.0

HANODE2 Max= 157.0

HANODE3 Max= 151.0

151.0



RUN 6707

start 23:31  
stop

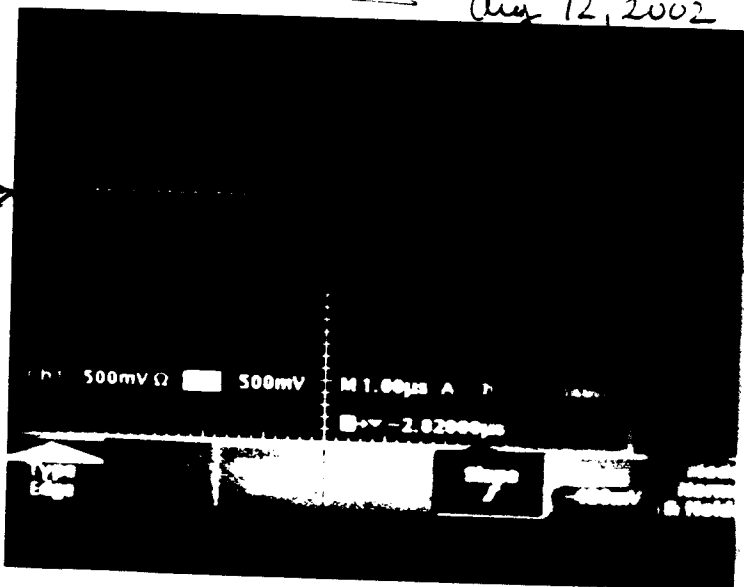
Elastics disconnected during run to test timing between IC and gammas.

23:50

Using digital scope and triggering on IC signal using 5-clip and IC-clip signals the time delay of the IC wrt the  $\gamma$ -array is  $\sim 5.25 \mu s$

$\gamma$ -array  $\rightarrow$   
IC  $\rightarrow$

Aug 12, 2002



(Note: as the photo shows, I accidentally triggered on rising edge of lower trace. Subtracting off the width of the pulse, ~~plus~~ to correct for this, gives 5.25  $\mu s$  between the rising edges)

00:00 CW on Shift 13/8/02

~~Same as the~~ Shift objective: measure the leading edge of the 520.7  $\frac{keV}{u}$  resonance  $^{21}Ne+p \rightarrow ^{22}Na + \gamma$ . (to help res energy calibration issues)

Run 6708

start: 23:50 12/8 2002  
stop: 00:50 13/8 2002

Prague Magnet 2507.32 for 530.2  $\frac{keV}{u} = E_{ISAC}$

MD1 NMR = 4359.35 G  
 $E_{cal} = 519.6 \frac{keV}{u}$

Witnessed & Understood by me.

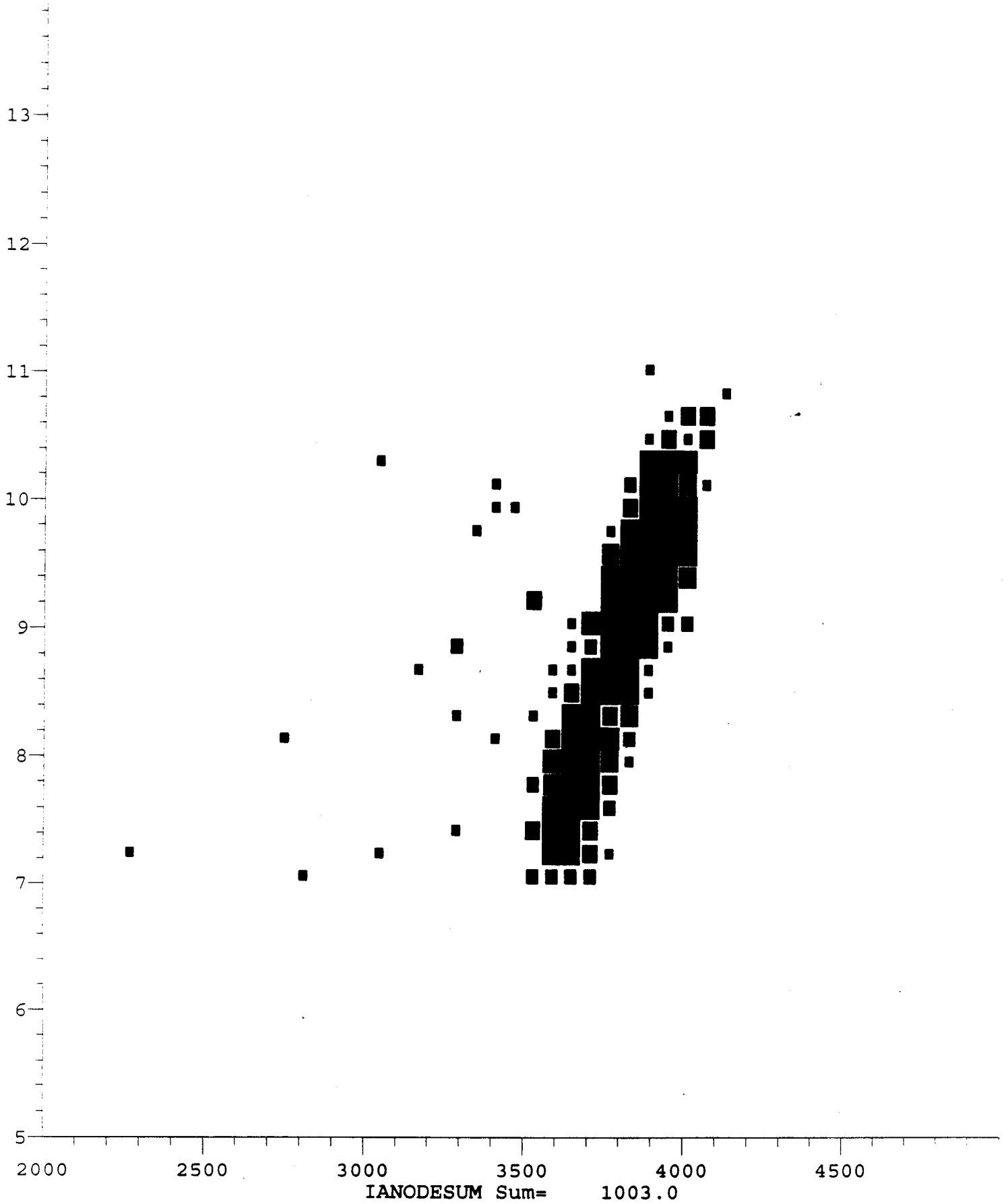
Date

Invented by

Date

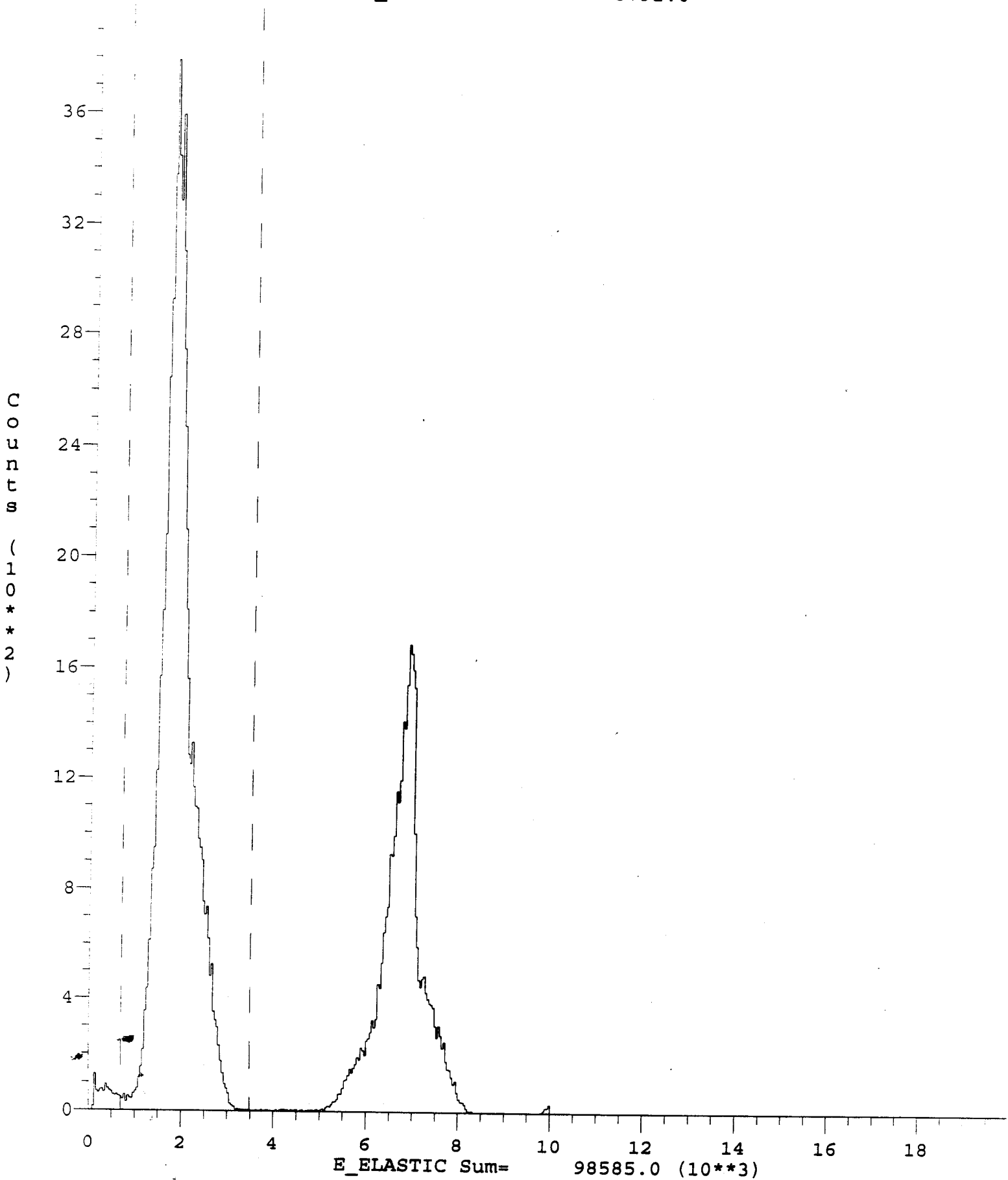
Recorded by

Run # 6655 Sat Aug 10 13:58:33 2002  
HE1ESUM Max= 5.0

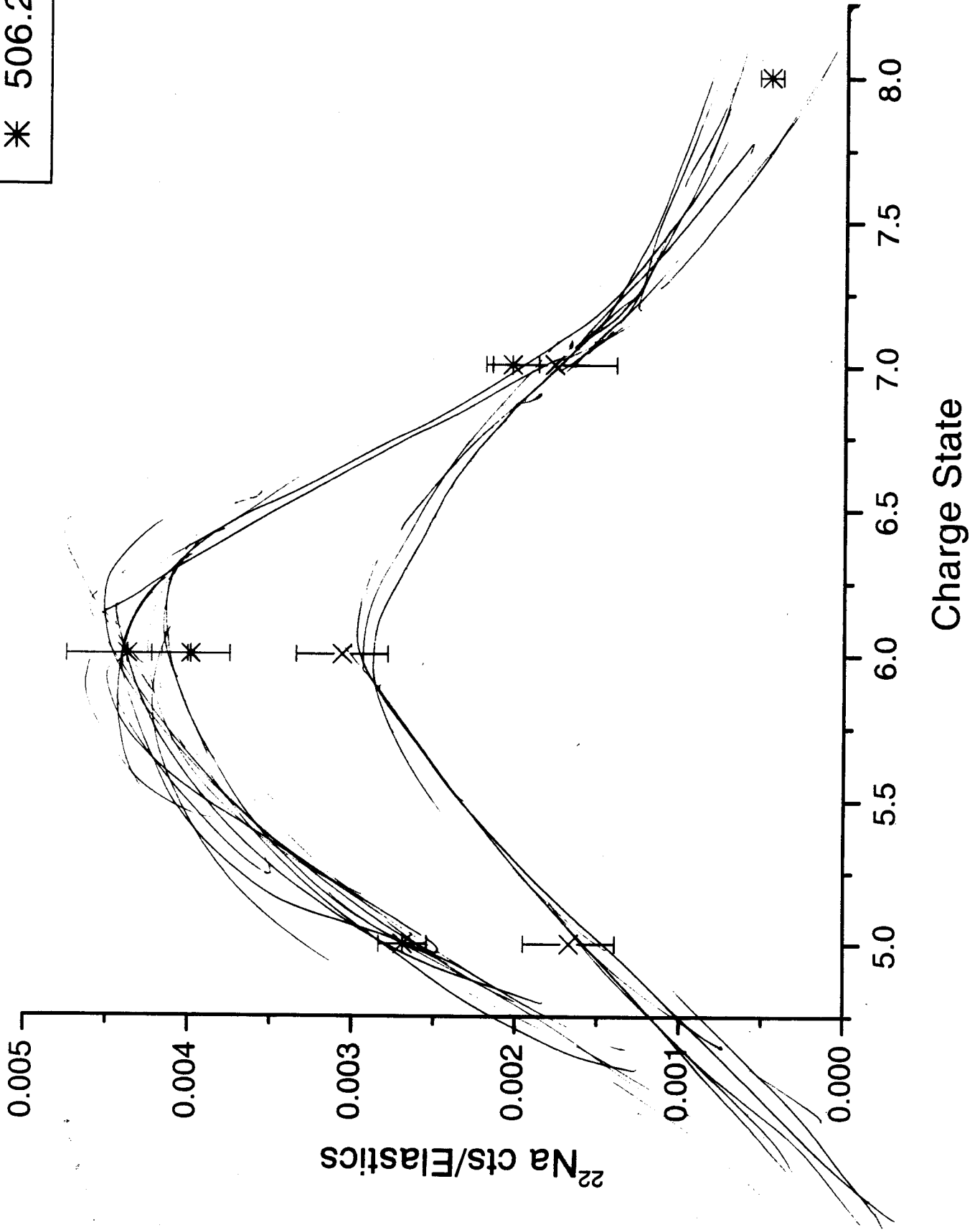




( 680.0000) ( 3520.0000)  
Sum 63563. Xc 1873.784 FWHM 870.098  
Run # 6672 Sun Aug 11 15:42:04 2002  
HE\_ELASTIC Max= 3792.0



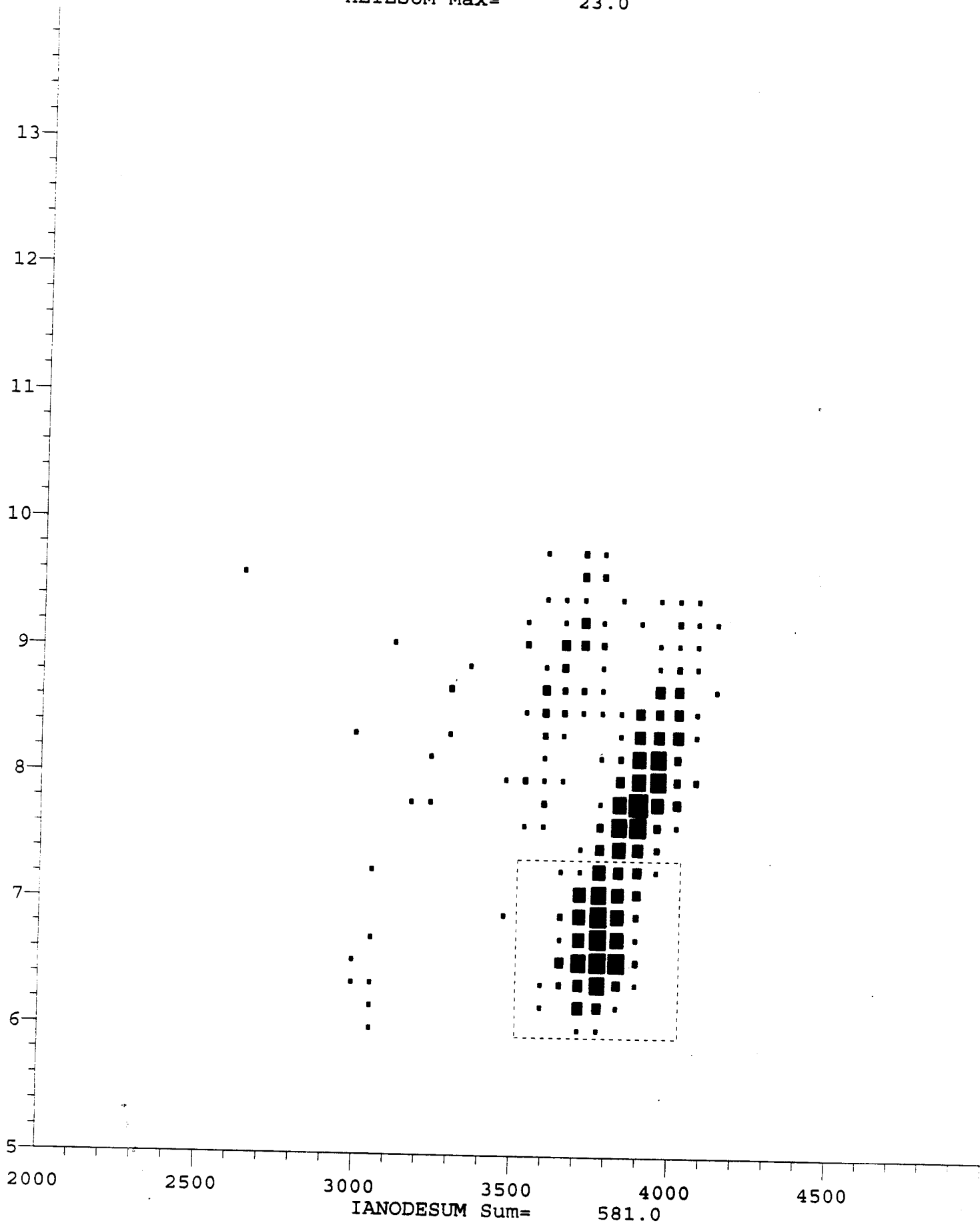
X 511.2 keV/u  
\* 506.2 keV/u



IC 6.5 Test

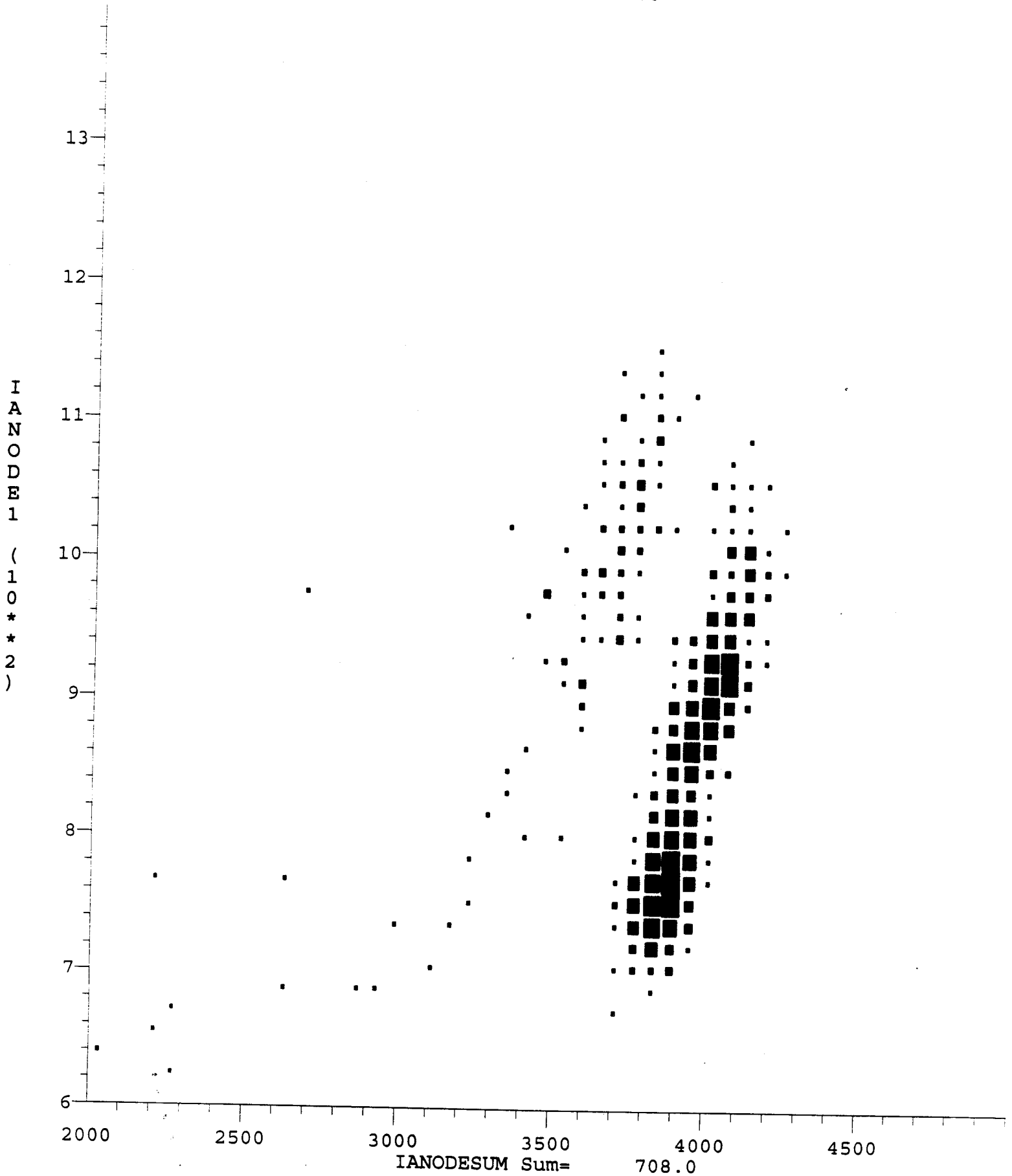
( 3500.0000, 590.0000) ( 4040.0000, 734.0000)  
Sum 269. Xc 3777.807 FWHM 149.021 Yc 679.699 FWHM 84.959  
Run # 6645 Fri Aug 9 22:48:28 2002  
HE1ESUM Max= 23.0

I  
A  
N  
O  
D  
E  
1  
(  
1  
0  
\*  
\*  
2



JC: 7.5 TAN

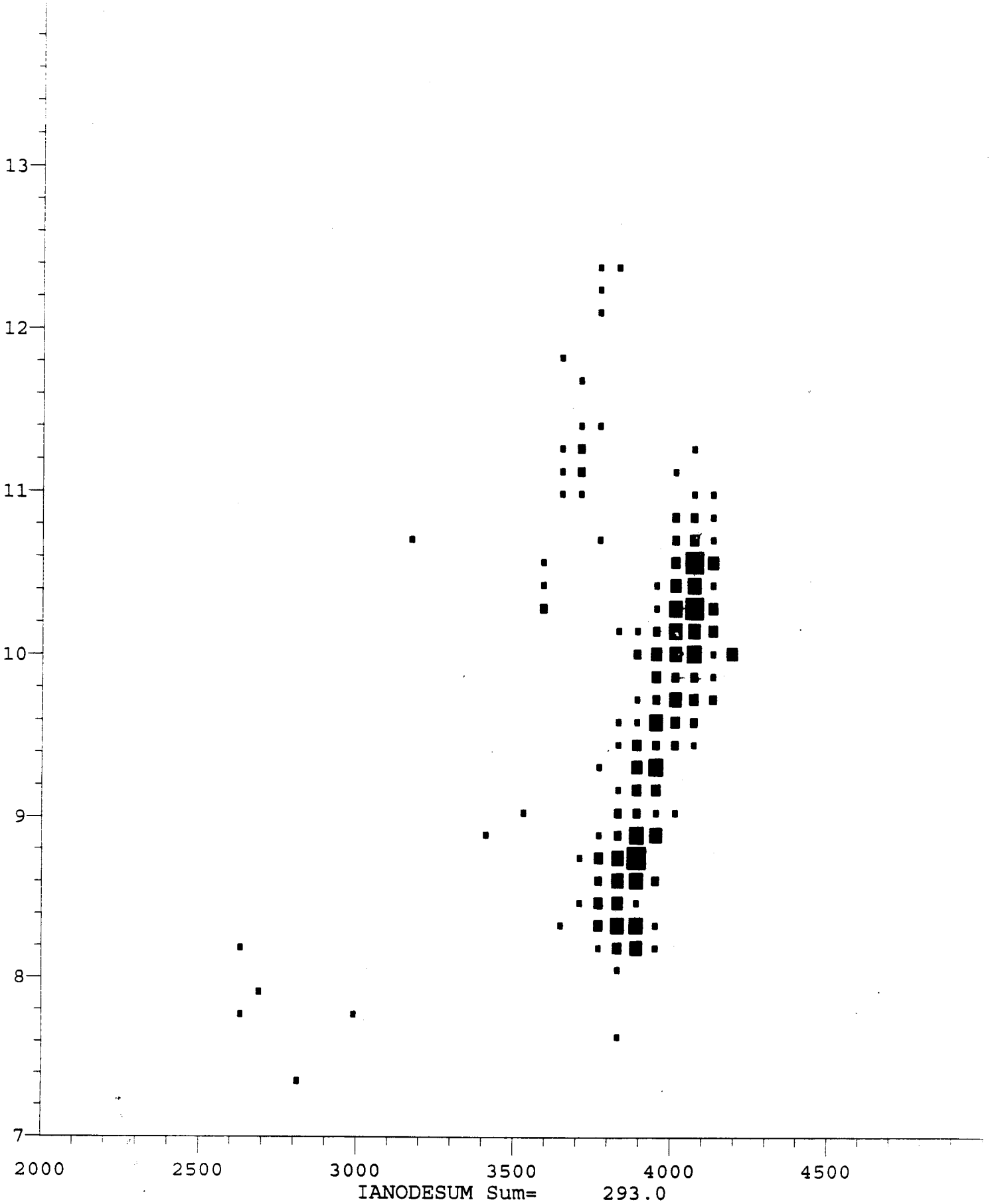
Run # 6644 Fri Aug 9 21:47:34 2002  
HE1ESUM Max= 20.0

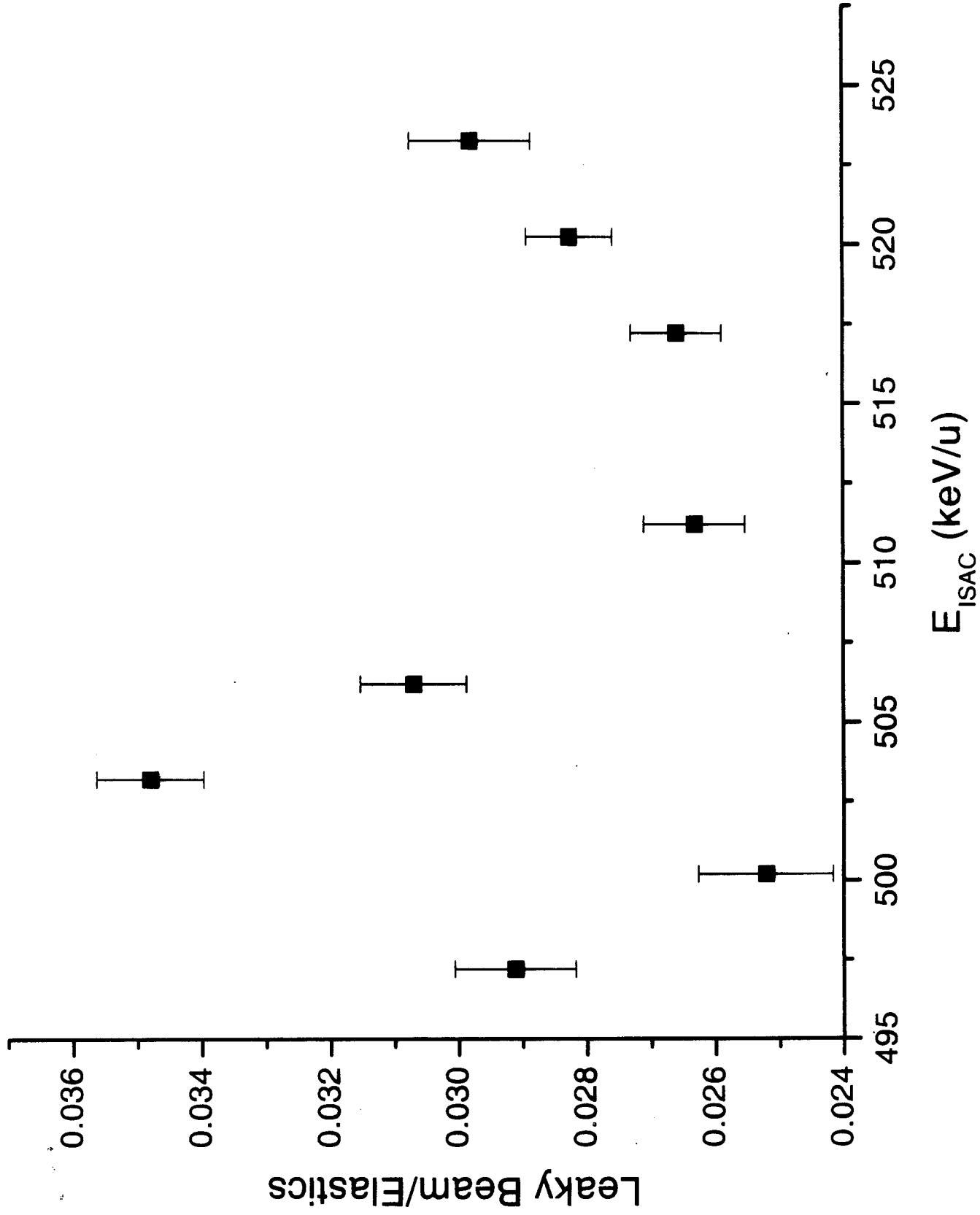


JC : 8.5 Torr

Run # 6636 Fri Aug 9 15:10:58 2002  
HELESUM Max= 12.0

IANODE 1  
( 10 \* \* 2 )





HANODE1 Max=

Run # 37.0

6655

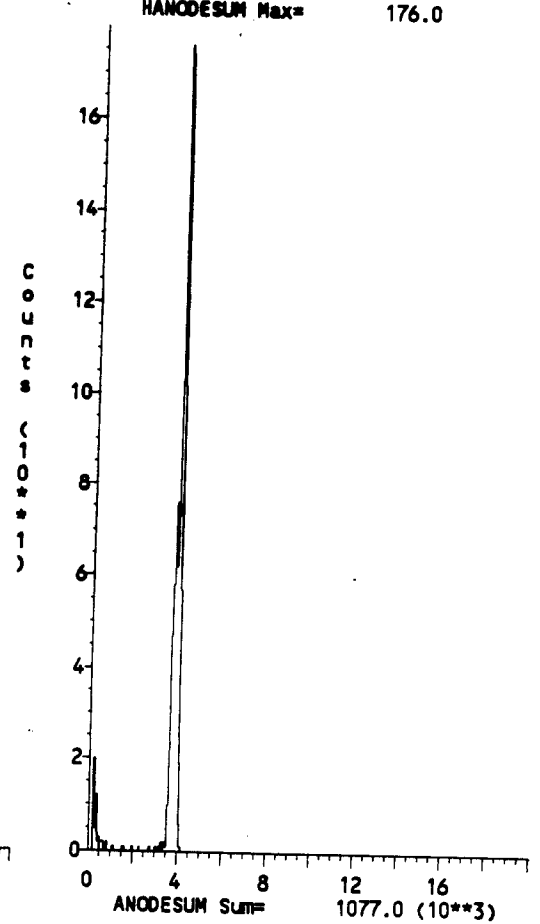
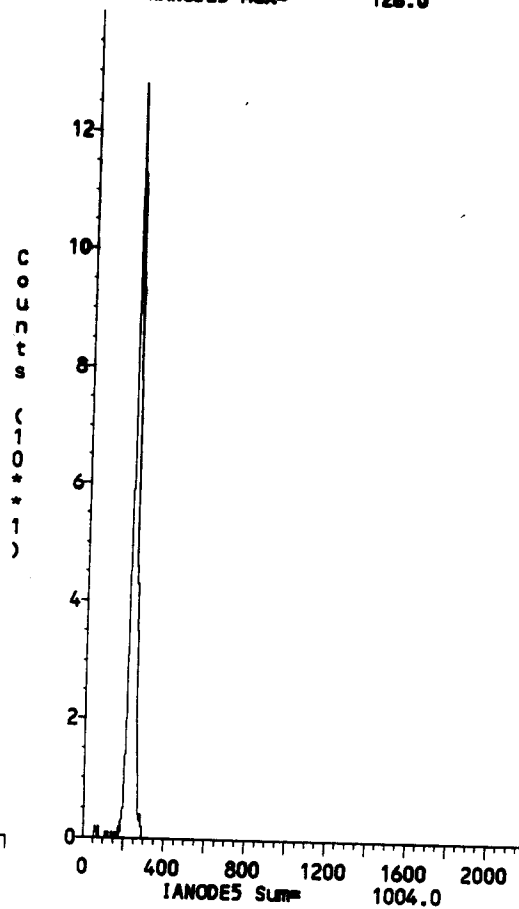
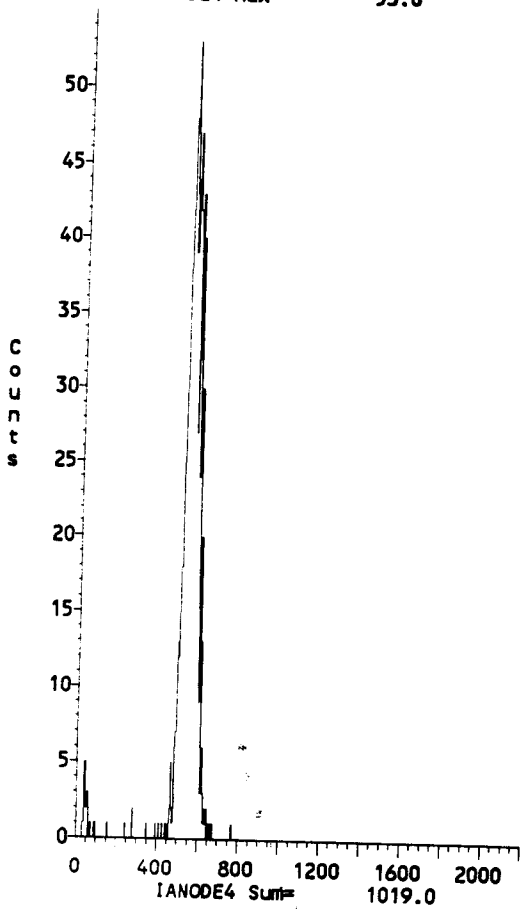
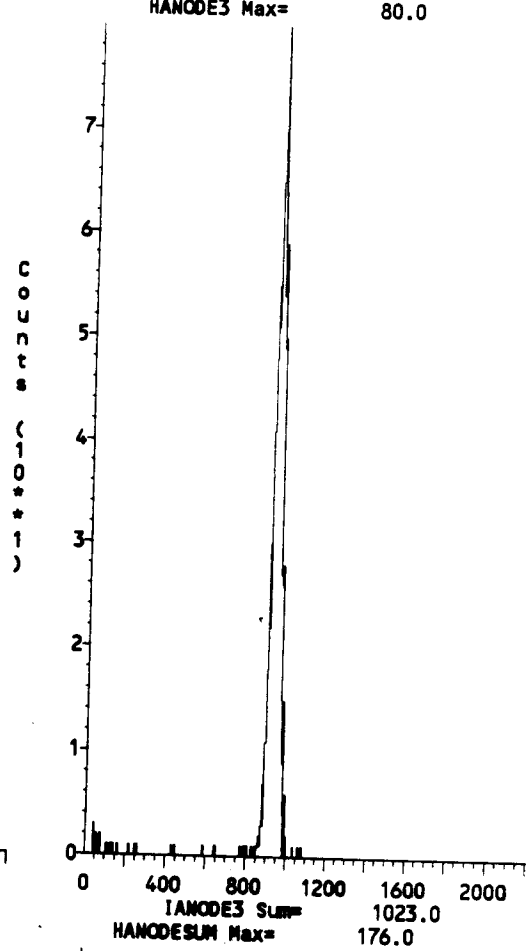
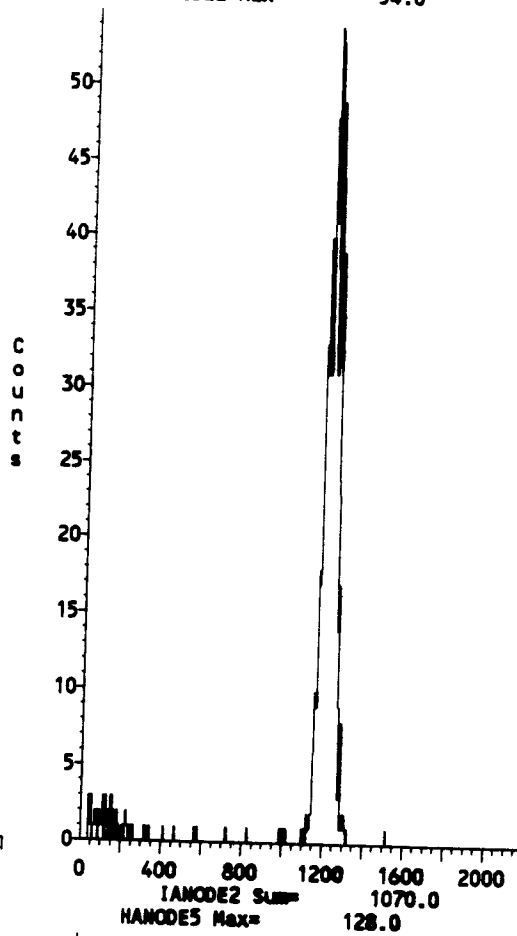
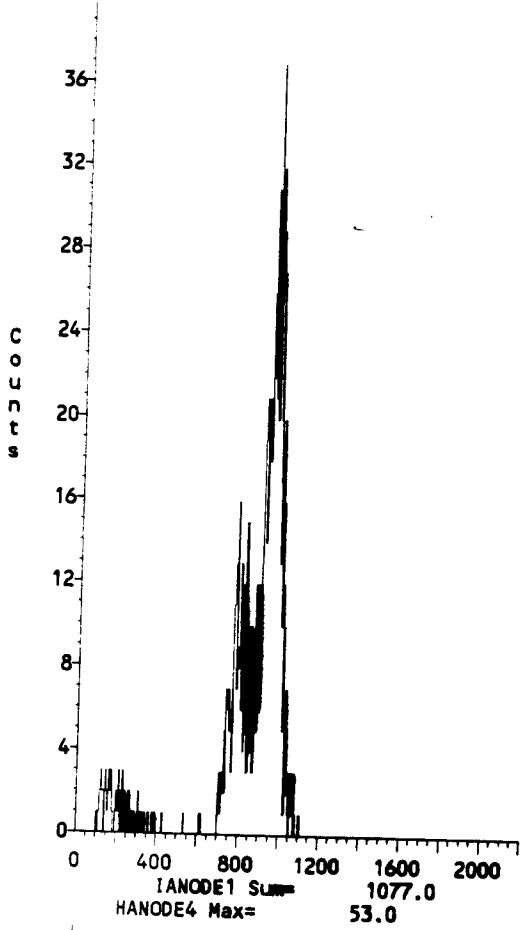
Sat Aug 10 13:58:59 2002

HANODE2 Max=

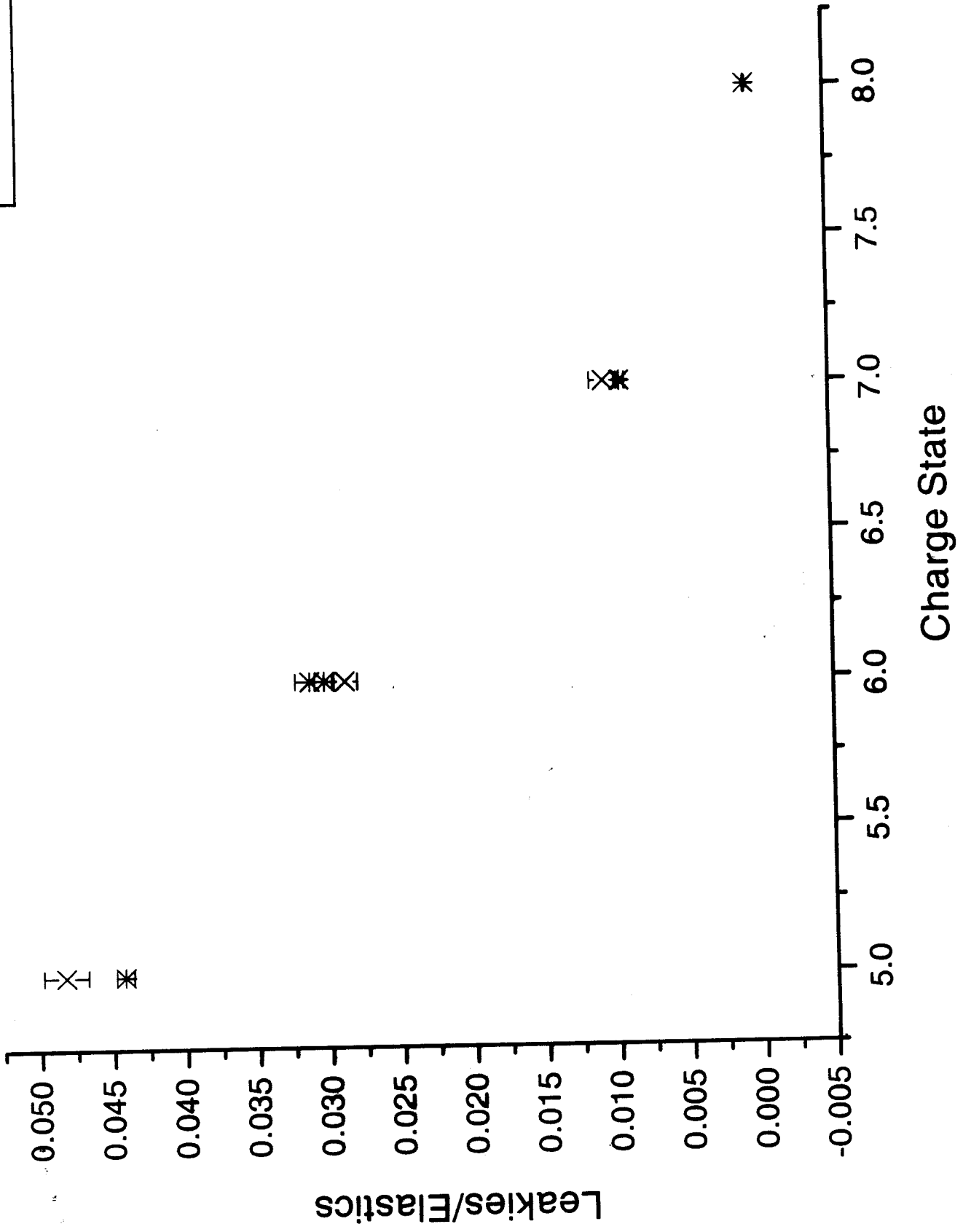
54.0

HANODE3 Max=

80.0



X 511 keV/u  
\* 506 keV/u





Run # 6655 Sat Aug 10 13:04:29 2002  
HE1ESUM Max= 14.0

